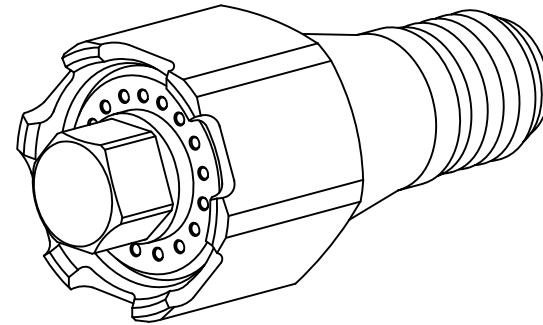


707-AL AND 707-SS

**WindJet®**

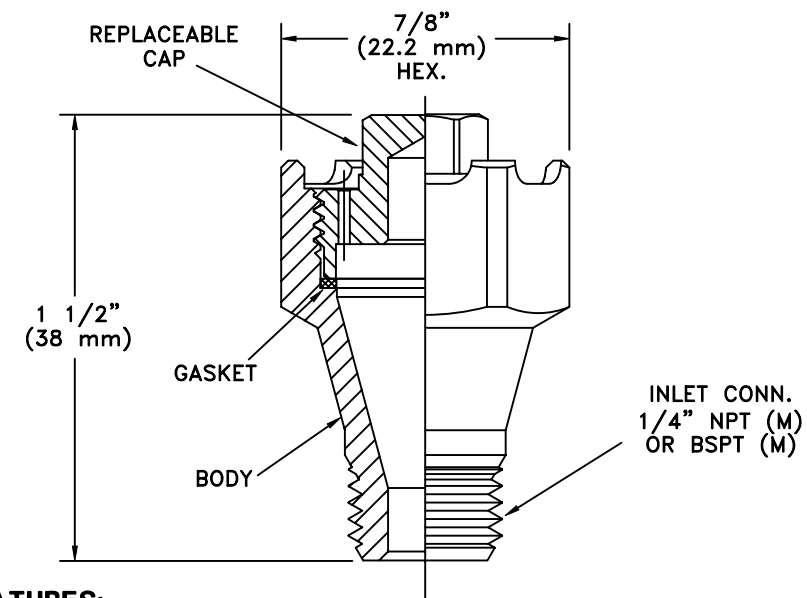
**AIR CONTROL NOZZLES**



**TYPICAL APPLICATIONS:**

- PARTS CLEANING
- COOLING
- MATERIAL CONVEYING
- DRYING
- HAND HELD BLOW-OFF GUNS

NOZZLE No.	1/4" INLET CONN.		CAP COLOR	MATERIAL	WEIGHT
	NPT (M)	BSPT (M)			
AA707-1/4-AL-11	●	-	GREEN	ALUMINUM (BLACK ANODIZED BODY)	.56 oz. (15.8 g)
AAB707-1/4-AL-11	-	●			
AA707-1/4-AL-15	●	-	YELLOW		
AAB707-1/4-AL-15	-	●			
AA707-1/4-AL-23	●	-	RED		
AAB707-1/4-AL-23	-	●			
AA707-1/4-SS-11	●	-	NATURAL (SS)	STAINLESS STEEL	1.6 oz. (44.4 g)
AAB707-1/4-SS-11	-	●			
AA707-1/4-SS-15	●	-			
AAB707-1/4-SS-15	-	●			
AA707-1/4-SS-23	●	-			
AAB707-1/4-SS-23	-	●			



**FEATURES:**

- EFFICIENT USE OF AIR . . . REDUCES OPERATING COSTS.
- LOW NOISE LEVEL. LESS THAN OSHA STANDARD 1910.95.
- MEETS OSHA REQUIREMENTS FOR DEAD END PRESSURE.
- CONCENTRATED ROUND SPRAY PATTERN PROVIDES HIGH IMPACT.
- CAP CAN BE REMOVED TO CLEAN ORIFICES.
- CAP CAN BE CHANGED FOR DIFFERENT FLOW RATES COLOR CODED FOR ALUMINUM MODELS.
- MADE OF TOUGH, LIGHTWEIGHT ALUMINUM STAINLESS STEEL WITH HIGH TEMPERATURE GASKET.
- CAN BE MOUNTED IN GROUPS FOR GREATER INTENSITY.
- MAXIMUM PRESSURE - 125 PSI (8.6 bar).

NOZZLE No.	TYPICAL CAPACITY - IN SCFM AND NI/min AT VARIOUS AIR PRESSURES									
	10 PSI	0.7 bar	30 PSI	2 bar	40 PSI	3 bar	60 PSI	4 bar	90 PSI	6 bar
	SCFM	NI/min	SCFM	NI/min	SCFM	NI/min	SCFM	NI/min	SCFM	NI/min
AA707--11	5.2	147	9.6	266	11.7	354	16.0	442	22.3	612
AA707--15	6.4	181	12.4	345	15.3	462	21.0	578	29.4	810
AA707--23	10.4	294	19.2	530	23.5	708	32.3	889	45.0	1237

**HOW TO ORDER:** SPECIFY NOZZLE No.

**EXAMPLES:** AA707-1/4-AL-11  
AAB707-1/4-AL-11 (FOR BSPT)

**DESCRIPTION**

No. AA\_707--AL & AA\_707--SS  
WINDJET® AIR CONTROL NOZZLES



**Spraying Systems Co.**

Spray Nozzles and Accessories

North Avenue at Schmale Rd. • P.O. Box 7900  
Wheaton, IL 60189-7900

Ref:

Data Sheet No.

Revision No. 1

**707-AL/SS**