



# GENERAL DATA

Request #01556480  
File: R-G\_DST\_LIGHT\_EN\_COMPRESSED\_SI#1556480

Section



PDF-Datasheet

R\_MI\_28\_PFL\_1/7\_63B14\_MI\_INOIL\_STD\_Without\_Paint\_N\_-----

## A.2.10.10 Product Family

CODE_MASTER	CODE_Maschine_MASTER	STM_STDL_STC_R-G
M_MASTER	Machine_MASTER	R-G

## A.2.10.20 Family Features

G_CHR_A	Feature No.1	Round Worm gearboxes and gear motors R and torque limiters
---------	--------------	--

## A.3.10.10 Gearbox coding parameters - BASIC

M	Machine	R
TYPCON	Connection type	MI
SERIES	Series - Product	- = Series - STD
SIZE	Size	28
OV	Output Version	PFL
MV	Mounting Version	- = Requirement not applicable
OF	Output flange	- = Requirement not applicable
IR	Reduction ratio	1/7
IECT	IEC type and Input Shaft	- = Direct coupling
IV	Input Version	IEC = IEC - Motor Type
IS	Input shaft	63B14
BE	Input double extension	- = no double extension
TOBE	Tapered Output Bearings	- = Output Radial Ball Bearing
LOV	Limiter Version	- = Standard shaft - without Limiter
LOM	Limiter motion output side	- = Standard shaft - without Limiter
LHC	Limiter oversize calibration	- = Without HEAVY Calibration
LSOS	Limiter supply status	- = If not specified in detail the limiter is supplied without calibration
TYPSPD	Output shaft type	SI = mm
SD	Shaft Diameter	Ø14
MPOF	Output Flange Side	- = Standard
MP	Mounting positions	M1





# GENERAL DATA

Request #01556480  
File: R-G\_DST\_LIGHT\_EN\_COMPRESSED\_SI#1556480

Section



PDF-Datasheet

R\_MI\_28\_PFL\_1/7\_63B14\_MI\_INOIL\_STD\_Without\_Paint\_N\_-----

## A.3.20.10 ACC1 - Accessories - Output End

ACC1 ACC1 - Accessories - Output End Without Option

ACC1POSDXSX ACC1 - Position RH - LH -

## A.3.20.30 ACC3 - Accessories - Shaft Mounted Versions

ACC3 ACC3 - Accessories - Shaft Mounted Versions Without Option

ACC3POSDXSX ACC3 - Position RH - LH -

ACC3POSBR ACC3 - Position BR. -

## A.3.20.90 ACC9 - Accessories - General

ACC9 Accessories - General Without Option

## A.3.30.10 OPT - Options - Material of sealing rings

OPT OPT - Options - Material of sealing rings Oil Seals Standard

## A.3.30.20 OPT1 - Options - Lubricant supply status and lubricant technical specifications

OPT1 OPT1 - Options - Oil supply status INOIL\_STD = Gearbox with lubricant STM standard

## A.3.30.30 OPT2 - Options - Painting

OPT2 OPT2 - Options - Painting Without\_Paint = Without painting

## A.3.41.10 MOTOR GEARBOXES

MGBCK Gear motors - YES/NO N

## A.3.50.10 Certification

MAR Marking -

## A.3.50.20 Family selection

MGB Gear motors -

IN Inverter option -

BF Balanced winding option (bi-phase) -

## A.3.50.30 Power settlement

POL Number of poles -

TOW Winding type -

SIZEM Size -

LEN Length -

## A.3.50.40 Fastening

DV Shape -

PMT Terminal board position -

AVC Design configuration -





# GENERAL DATA

Request #01556480  
File: R-G\_DST\_LIGHT\_EN\_COMPRESSED\_SI#1556480

Section



PDF-Datasheet

R\_MI\_28\_PFL\_1/7\_63B14\_MI\_INOIL\_STD\_Without\_Paint\_N\_-----

SDM	Shaft diameter	-
F	Flange	-
HB14	Number of holes in B14 flange	-

### A.3.50.70 Protection level

IP	Protection level	-
----	------------------	---

### A.3.50.80 Supply and duty

PLATE	Plate	-
POW	Power	-
CEP1	Motor cable entry 1 position	-
CEP2	Motor cable entry 2 position	-
TOD	Type of duty	-

### A.3.50.100 Suitable type of brake

TOB	Brake type	-
RLP	Release lever position	-
IPF	Protection level of brake	-

### A.3.60.10 Mechanical

DES	Double protrusion shaft	-
-----	-------------------------	---

### A.3.60.20 Ventilation

PC	Ventilation	-
----	-------------	---

### A.3.60.30 Servo-ventilation separate power supply

SAVE	Servo-ventilation separate power supply	-
VSAVE	Fan external power supply	-
PSAVE	Fan separate terminal board position	-
CEPV	Servo-ventilation cable entry position	-

### A.3.60.50 Mechanical protection

RS	Rain protection roof	-
----	----------------------	---

### A.3.60.80 Thermal protection

CEPT	Thermal cable entry position	-
------	------------------------------	---

### A.3.60.90 Colour

PA	Painting	-
----	----------	---





# PRODUCT DATA SHEET

Request #01556480  
File: R-G\_DST\_LIGHT\_EN\_COMPRESSED\_SI#1556480

Section



PDF-Datasheet

R\_MI\_28\_PFL\_1/7\_63B14\_MI\_INOIL\_STD\_Without\_Paint\_N\_-----

## C.1.10.30 Gearbox - Basic plate data

<b>n1</b>	Input shaft speed	<b>1400</b>	[rpm]
<b>n2</b>	Output shaft speed	<b>200</b>	[rpm]
<b>ir_gear</b>	Transmission ratio	<b>7</b>	[Numeric]
<b>TN</b>	Gearbox Nominal Output Torque	<b>15</b>	[Nm]
<b>P1n</b>	Nominal Input Mechanical Power	<b>0.39</b>	[kW]
<b>RD%</b>	Dynamic efficiency	<b>81</b>	[Numeric]
<b>Fr(I/2) n1</b>	Input Nominal Radial Load for Gearbox at I/2 distance	<b>58</b>	[N]
<b>Fr(I/2) n2</b>	Output Nominal Radial Load for Gearbox at I/2 distance	<b>655</b>	[N]
<b>Fa n1</b>	Input Nominal Axial Load	<b>12</b>	[N]
<b>Fa n2</b>	Output Nominal Axial Load	<b>131</b>	[N]
<b>Ptn</b>	Thermal Power Rating	<b>0.58</b>	[kW]





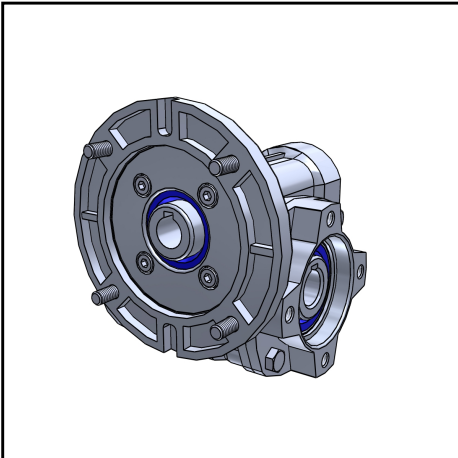
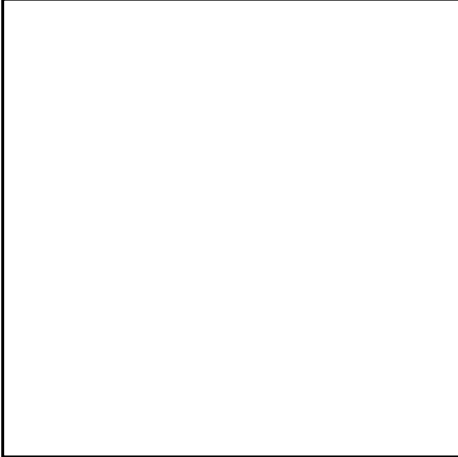


Designation

R\_MI\_28\_PFL\_1/7\_63B14\_M1\_INOIL\_STD\_Without\_Paint\_N\_-----

**E.0**

Designation gearbox:



<b>M (Machine)</b>	R
<b>TYPCON (Type Connection)</b>	MI = pre arrangement motor
<b>SERIES (Series - Product)</b>	- = Series - STD
<b>SIZE (Size)</b>	28
<b>OV (Output Version)</b>	PFL = fixing flange design
<b>MV (Mounting Version)</b>	- = Requirement not applicable
<b>OF (Output Flange)</b>	- = Requirement not applicable
<b>IR (Reduction ratio)</b>	1/7
<b>IECT (IEC type and input shaft)</b>	- = Direct coupling
<b>IV (Input Version)</b>	IEC = IEC - Motor Type
<b>IS (Input shaft)</b>	63B14
<b>BE (Input double extension)</b>	- = no double extension
<b>TOBE (Tapered Output Bearings)</b>	- = Output Radial Ball Bearing
<b>LOV (Limiter Output Version)</b>	- = Standard shaft - without Limiter
<b>LOM (Limiter Output Motion)</b>	- = Standard shaft - without Limiter
<b>LHC (Limiter HEAVY Calibration)</b>	- = Without HEAVY Calibration
<b>LSOS (Limiter-Scope of the supply)</b>	- = If not specified in detail the limiter is supplied without calibration
<b>TYPSD (Typ output shaft)</b>	SI = mm
<b>SD (Shaft Diameter)</b>	Ø14
<b>MPOF (Mounting Position Output Flange)</b>	- = Standard
<b>MP (Mounting positions)</b>	M1
<b>ACC1 (ACC1 - Accessories - Output Configuration)</b>	Without Option
<b>ACC1POSDXSX (ACC1 - Position DX - SX)</b>	-
<b>ACC3 (ACC3 - Accessories - Shaft Mounted Version)</b>	Without Option
<b>ACC3POSDXSX (ACC3 - Position DX - SX)</b>	-
<b>ACC3POSBR (ACC3 - Position BR.)</b>	-
<b>ACC9 (ACC9 - Accessories - Custom)</b>	Without Option
<b>OPT (OPT - Options - Materials of Seals)</b>	Oil Seals Standard
<b>OPT1 (OPT1 - Options - Scope of the supply - Options - OIL)</b>	INOIL_STD = Gearbox with lubricant STM standard
<b>OPT2 (OPT2 - Options - Painting and surface protection)</b>	Without_Paint = Without painting
<b>MGBCK (Motor gearboxes - YES/NO)</b>	N = NO - Motor gearboxes
<b>MAR (Marking)</b>	-
<b>MGB (Motor gearboxes)</b>	-
<b>IN (Options inverter)</b>	-
<b>BF (Options balanced winding)</b>	-
<b>POL (Pole n.)</b>	-
<b>TOW (Type of winding)</b>	-
<b>SIZEM (Motor size)</b>	-
<b>LEN (Length)</b>	-
<b>DV (Design version)</b>	-





PDF-Datasheet

# Dimensioni Dimensions Abmessungen

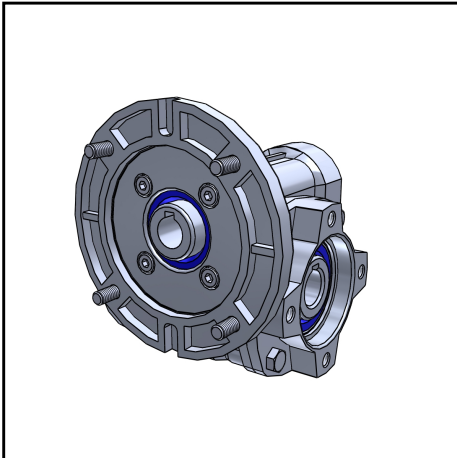
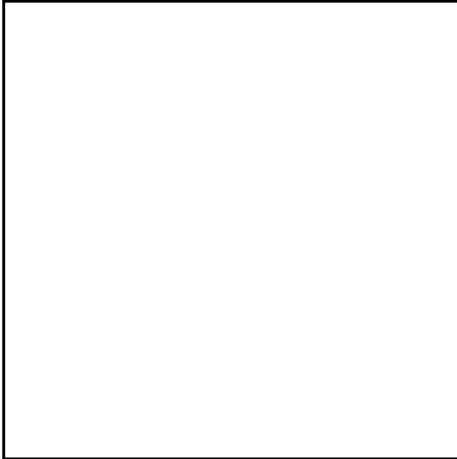
Section:

**E**

Designation **R\_MI\_28\_PFL\_1/7\_63B14\_M1\_INOIL\_STD\_Without\_Paint\_N**-----

**E.0**

**Designation gearbox:**



<b>PMT (Position Terminal Box)</b>	-
<b>AVC (Available configurations)</b>	-
<b>SDM (Motor shaft diameter)</b>	-
<b>F (Flange)</b>	-
<b>HB14 (n° holes flange b14)</b>	-
<b>IP (Protection level)</b>	-
<b>PLATE (Plate)</b>	-
<b>POW (Power)</b>	-
<b>CEP1 (cable entry 1 position motor)</b>	-
<b>CEP2 (cable entry 2 position motor)</b>	-
<b>TOD (Type of duty)</b>	-
<b>TOB (Type of brake)</b>	-
<b>RLP (Release lever position)</b>	-
<b>IPF (Protection level brake)</b>	-
<b>DES (Double ended shaft)</b>	-
<b>PC (Cooling)</b>	-
<b>SAVE (Separate power servoventilation)</b>	-
<b>VSAVE (External power supply fan)</b>	-
<b>PSAVE (Separate fan terminal position)</b>	-
<b>CEPV (cable entry position servoventilation)</b>	-
<b>RS (Rain shield)</b>	-
<b>CEPT (Thermal cable entry position)</b>	-
<b>PA (Painting)</b>	-



All contents, drawings and information in this document are sole property of STM S.p.A.  
 It cannot be disclosed for purposes other than under the agreement between the Customer and an authorized STM representative.  
 It cannot be reproduced (in whole or in part) without explicit written permission by STM S.p.A. legal representative,  
 and in this case the intellectual property of the document remains solely of STM S.p.A.  
 This PDF-Datasheet cancels and replace any previous edition and revision.  
 We reserve the right to implement modifications without notice.

**Date: 29.04.2024**  
**Page: E 2**

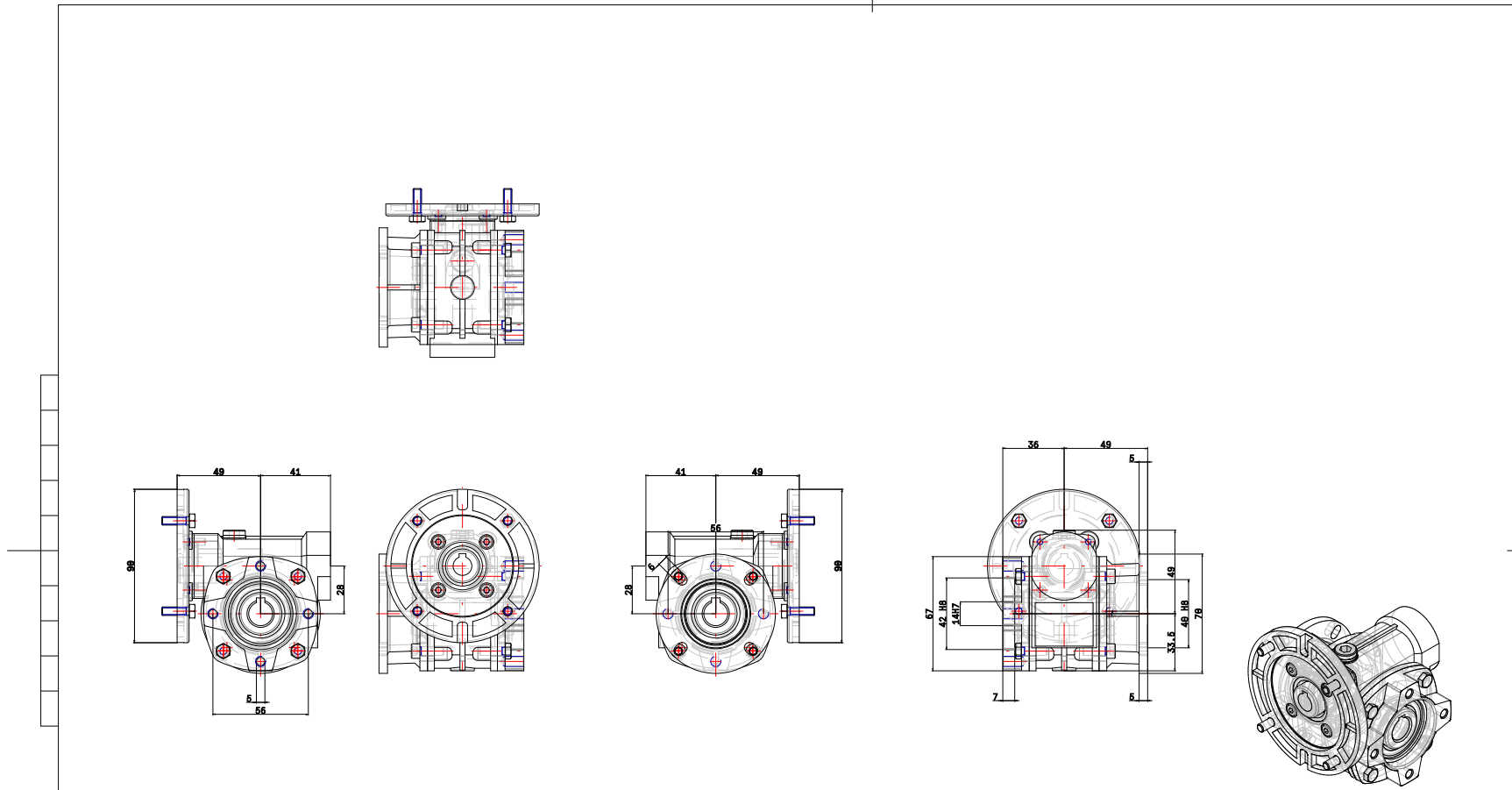
Legal warnings: LW-2D3D-Stmstar.pdf  
 Email: [info@stm.com](mailto:info@stm.com)  
 WebSite: <http://www.stmspa.com>

Designation

R\_MI\_28\_PFL\_1/7\_63B14\_M1\_INOIL\_STD\_Without\_Paint\_N - - - - -

E.1

General Dimension 2D:



M1 - Mounting position

WARNING! The complete 2D dimensioned drawing is available only with a default value for the parameter MP = M1

	FIG. TITLE			
	R_MI_28_PFL_1/7_63B14_M1_INOIL_STD_Without_Paint_N	DATE	U.S./M.M.	SIZE DIA.
	NO SCALE	29.04.2024	mm	AS
WARNING: THIS IS A PROPRIETY STM - GSM, NOT TO BE USED WITHOUT WRITTEN CONSENT OF STM - GSM.				

Date: 29.04.2024

Page: E 3