

Duty: 1.37 l/h of chemical @ 176 barg.

Hydraulic diaphragm positive return metering pump, variable-stroke-connecting rod; mechanism gear box enclosed in an oil-splash-lubricated cast iron casing. Pump casing coated with a water base type paint, OBL standard colour RAL7001, OBL standard dry coat thickness 50µm. Coating procedure type PV-A.

Model number **LYH 10 X9AATS 50 FA SCR MA0**

- Max capacity 2 l/h
- Max pressure 200 barg. (internal relief valve setting pressure)
- Operating pressure 176 barg.
- Flanged connections ½ 1500 RF (DISCHARGE) – 150 RF (SUCTION)
- Strokes per minute 50

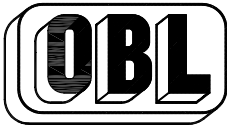
Double hydraulic diaphragm pumps head with built-in relief valve, air-bleed valve and mechanically actuated oil replenishing. Visual indication via inox radial pressure gauge + connection for remote signaling (at customer care)

Wetted materials:

- Pump head SS-316L
- Valve Ruby
- Valve seat Ceramic
- Diaphragm SS-316L (both hydraulic and process side)
- Valve seals FPM

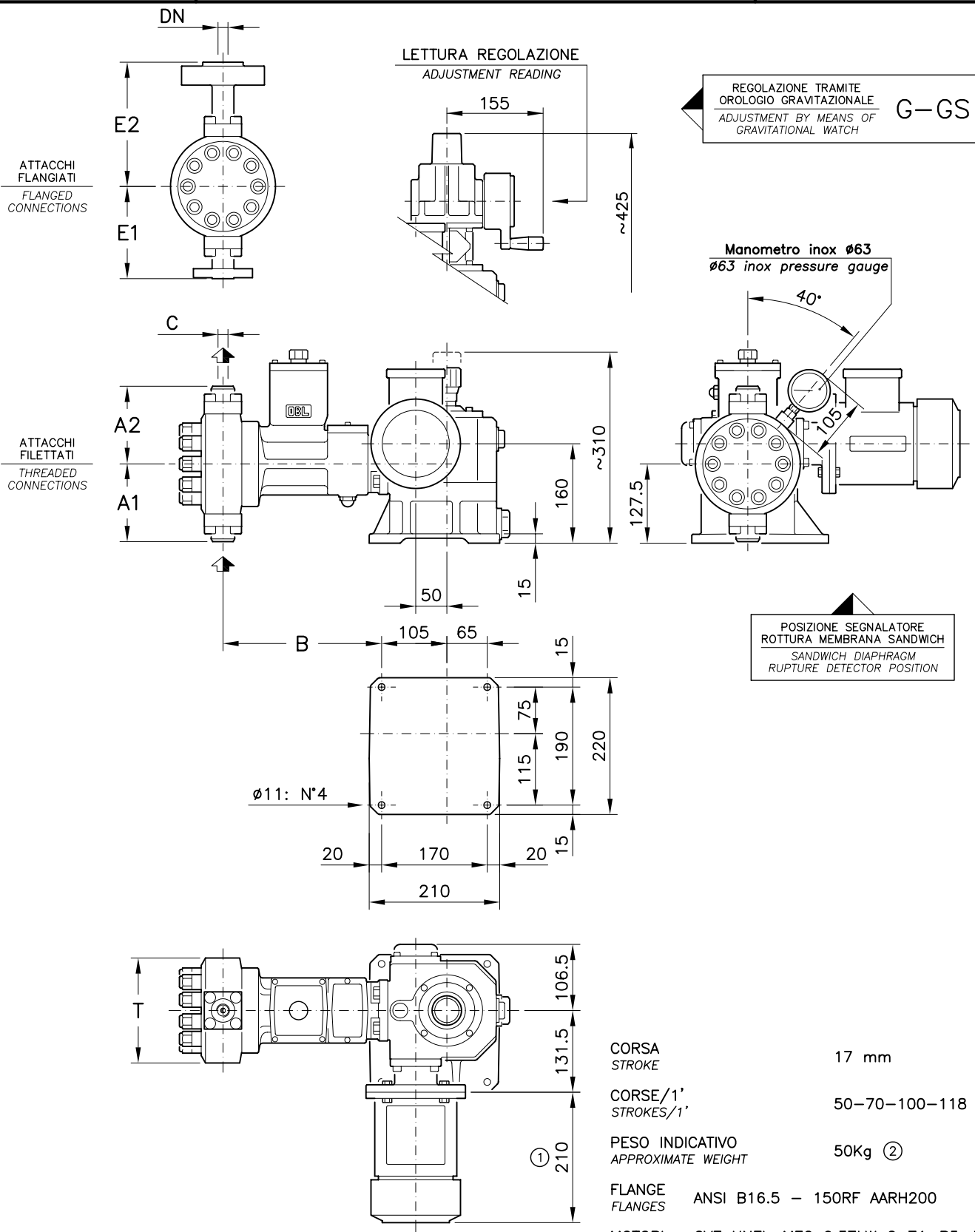
Manual stroke length adjustment from 0 ÷ 100% via graduated micrometer control knob, pump flow rate can be set with pump running or idle.

Pump provided without motor and with NEMA frame.



POMPA DOSATRICE A MEMBRANA TIPO LYHX9AATS
DIAPHRAGM METERING PUMP TYPE LYHX9AATS
REGOLAZIONE MANUALE

TAVOLA 5692	REV. 0	LINGUA I/E
SOSTITUISCE IL -	DATA 04/04/07	
MANUAL ADJUSTMENT		OVERALL DRAWING



ESECUZIONE STANDARD: MEMBRANA SANDWICH CON DOPPIE VALVOLE
STANDARD EXECUTION: SANDWICH DIAPHRAGM WITH DOUBLE VALVES

CON MOTORE EExd ① 0.37kW=246 ② +10Kg
WITH EExd MOTOR

TIPO Type	A1	A2	B	C NPT	DN ANSI B16.5	E1		E2		T ø	
						150RF 600RF	900RF 2500RF	1500RJ 2500RJ	600RF 2500RF		1500RJ 2500RJ
LYH 10	125	125	255	1/2"	1/2"	148.5	200	200	200	200	169

REV. _____
 MODIFICHE _____
 CONTR. _____
 DATA _____
 LUT/PROG. LUT-431
 DISEGNATO R. PRIOTTO
 CONTROLLATO IN ROSSO
 DISTRIBUZIONE
 DA DT OG IPR
 UV UA UC P/C
 QUESTO DISEGNO APPARTIENE ALLA OBL S.R.L. NESSUNA PARTE DI QUESTO DOCUMENTO PUO' ESSERE MODIFICATA, PRESTATATA, RIPRODOTTA O COPIATA. (INTERAMENTE O IN PARTE) - THIS DRAWING IS THE PROPERTY OF OBL S.R.L. NO PART OF THIS DOCUMENT MAY BE MODIFIED, LOANED, REPRODUCED NOR COPIED (WHOLE OR IN PART)