

Cod. Code <b>7000629</b>	Peso totale Total weight <b>1190 Kg</b>	Materiale Construction <b>GHISA EN-GJL-250 CAST IRON EN-GJL-250</b>	Girante Impeller <b>A CANALI WITH CHANNELS</b>
--------------------------	---	---	--

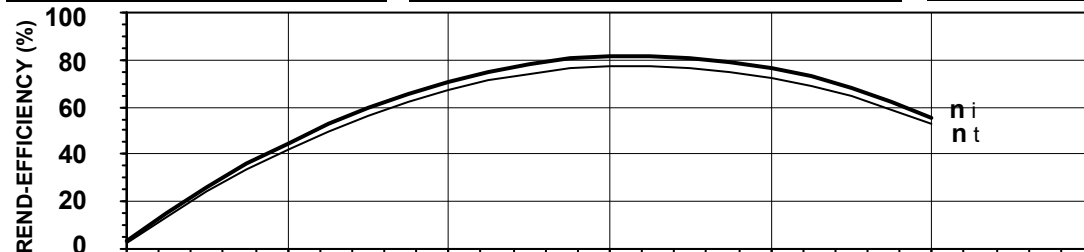
Idraulica - Hydraulic	
MANDATA DISCHARGE	<b>DN 300 mm</b>
ASPIRAZIONE SUCTION	<b>DN 350 mm</b>
PASSAGGIO LIBERO FREE PASSAGE	<b>50x140 mm</b>
DIAMETRO GIRANTE IMPELLER DIAMETER	<b>412 mm</b>

Rend. max - Best efficiency	
RENDIMENTO TOTALE TOTAL EFFICIENCY	<b>77,3 %</b>
RENDIMENTO IDRAULICO HYDRAULIC EFFICIENCY	<b>81,7 %</b>
POT. ASS. DALLA RETE ABS. POWER FROM MAINS	<b>57,2 kW</b>
PREVALENZA HEAD	<b>13,7 m</b>
PORTATA CAPACITY	<b>1146,4 m<sup>3</sup>/h</b>

Motore- Motor		M625T-65-400/50YY-IE3		
ALIMENTAZIONE POWER SUPPLY	<b>3ph 400/690V-50Hz</b>			
CLASSE DI ISOLAMENTO INSULATION CLASS	<b>H</b>			
VELOCITÀ NOMINALE NOMINAL SPEED	<b>965 rpm</b>			
POTENZA NOMINALE MOTORE RATED MOTOR POWER	<b>65,0 kW</b>			
CORRENTE DI SPUNTO STARTING CURRENT	<b>680,3 A</b>			
CORRENTE NOMINALE RATED CURRENT	<b>115,3 A</b>			
MOMENTO DI INERZIA TOTALE TOTAL MOMENT OF INERTIA	<b>2,9720 kgm<sup>2</sup></b>			
	CARICO-LOADING			
	4/4	3/4	1/2	
FATTORE DI POTENZA POWER FACTOR	<b>0,86</b>	<b>0,82</b>	<b>0,71</b>	
RENDIMENTO MOTORE MOTOR EFFICIENCY	<b>95 %</b>	<b>94 %</b>	<b>93 %</b>	

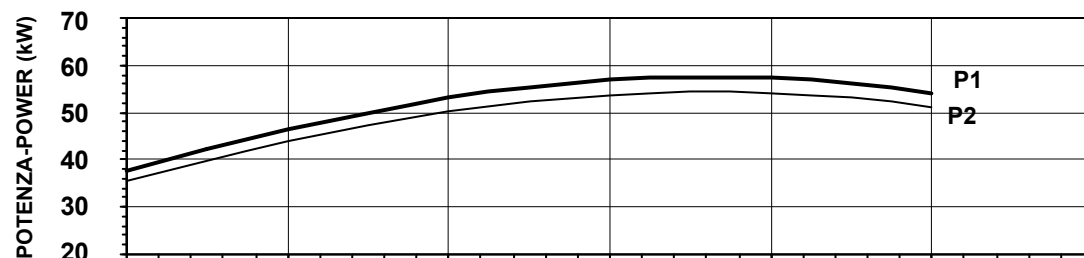
Impiego - Application	
TEMP. MAX DEL LIQUID PUMPED LIQUID MAX TEMP.	<b>&lt; 40 °C</b>
PROTEZIONE MECCANICA MECHANICAL PROT. DEGREE	<b>IP 68</b>
CAVO CABLE	<b>2X4G25+4G2,5 H07RNF</b>
CODICE DISEGNO DRAWING CODE	<b>725_300_25_1</b>
CURVA CURVE	<b>C725-605</b>

Protezioni - Protections	
PROTEZIONE TERMICA THERMAL PROTECTION	<input checked="" type="checkbox"/> YES
CONTROLLO INFILTRAZIONE HUMIDITY PROBE	<input checked="" type="checkbox"/> YES
II 2G Ex db h IIB T4 Gb	<input type="checkbox"/> NO
MANTELLO DI RAFFREDDAMENTO COOLING JACKET	<input type="checkbox"/> NO



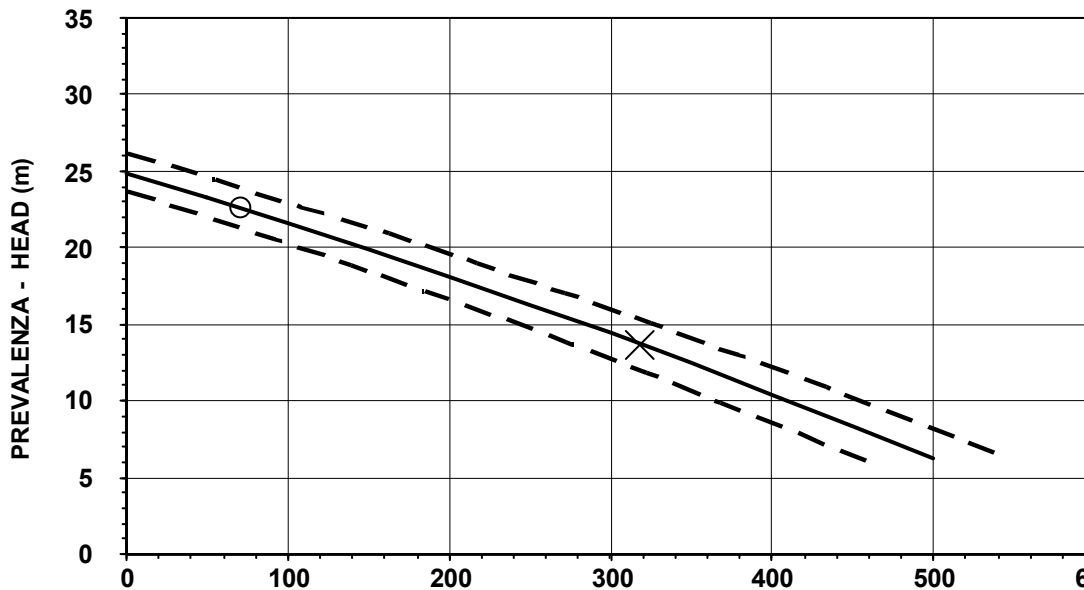
$\eta_i$  = Rendimento idraulico  
Hydraulic efficiency

$\eta_t$  = Rendimento totale  
Total efficiency



**P1** = Potenza ass. dalla rete  
Abs. power from mains

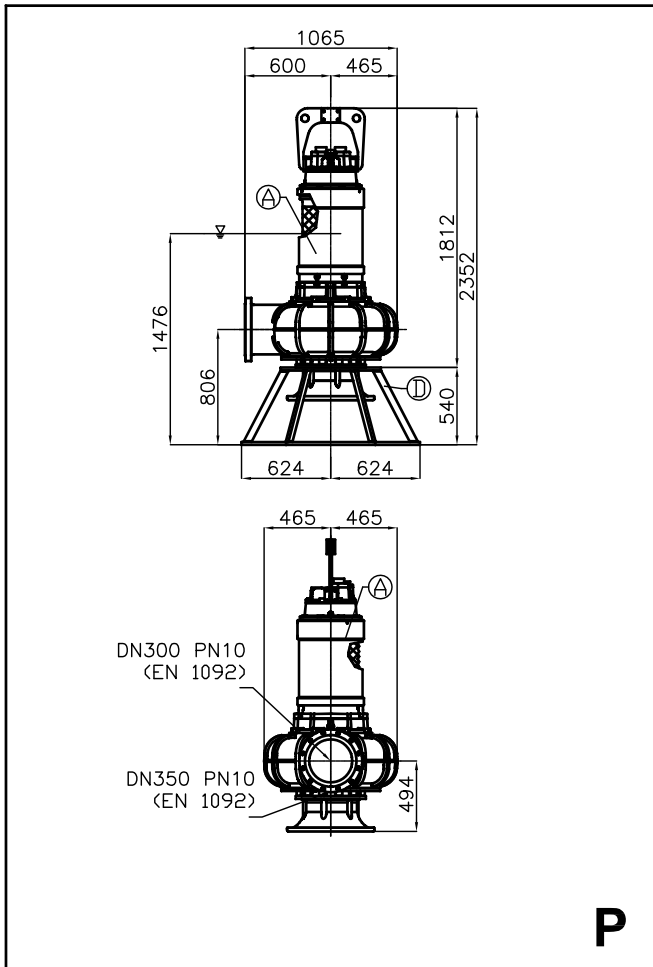
**P2** = Potenza idraulica  
Hydraulic power



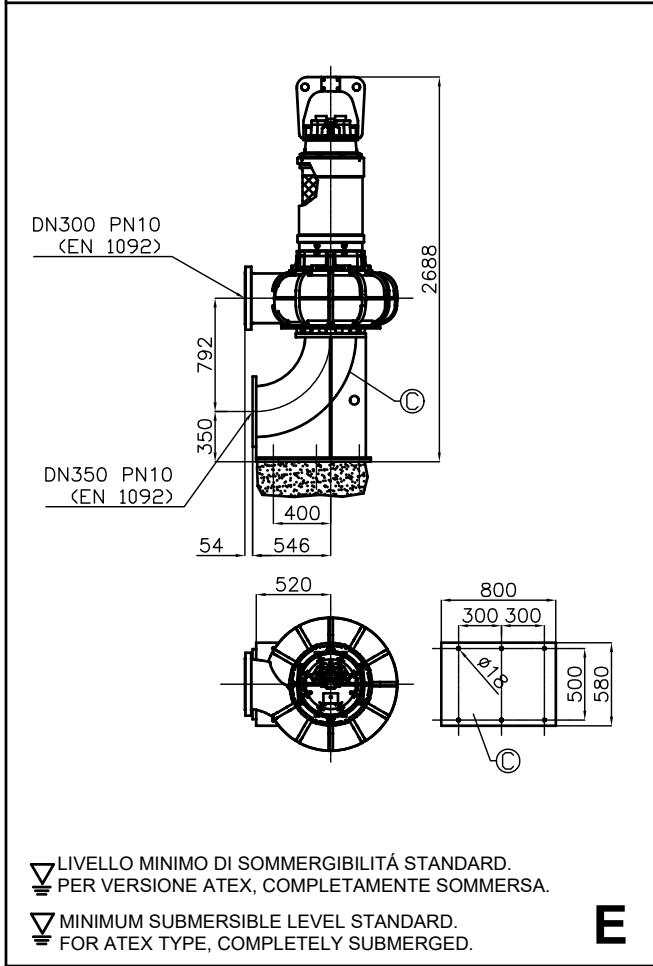
**O** = Portata minima  
Minimum capacity

**X** = Punto max rendimento  
Best efficiency point

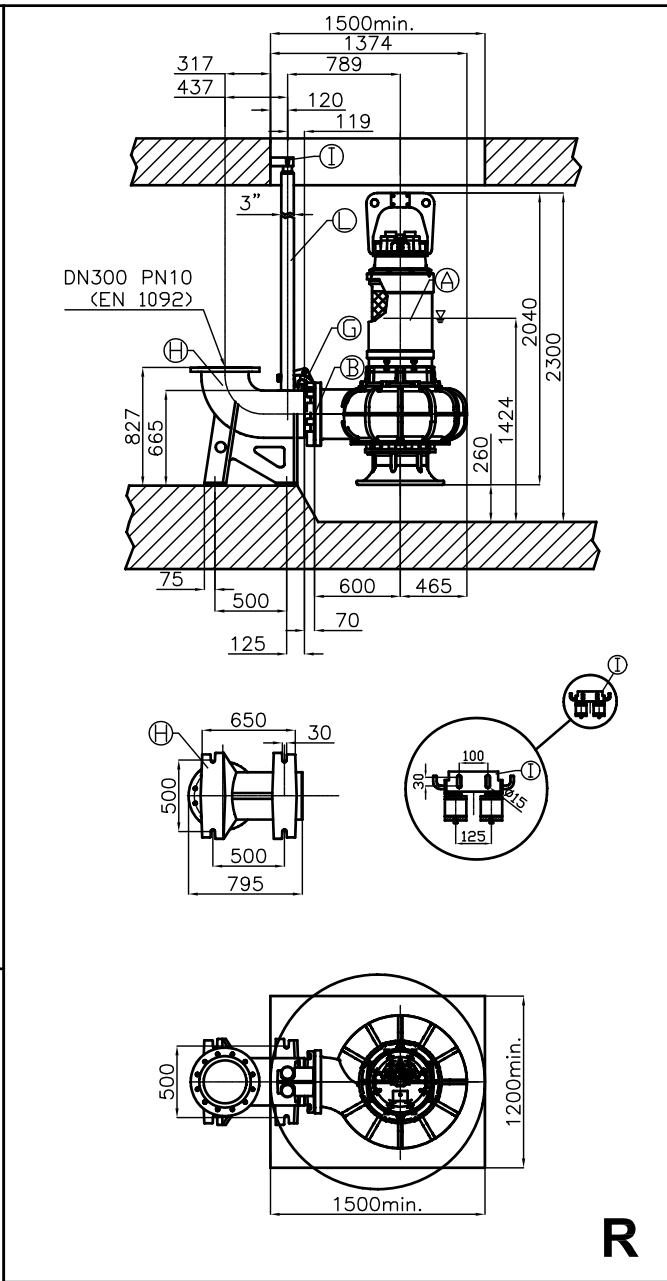




**P**



**E**



**R**

Pos.	Codice	Descrizione	Materiale	Peso Kg
Pos.	Code	Description	Material	Weight Kg
<b>A</b>	-	Elettropompa Sommersibile Submersible Pump	-	-
<b>B</b>	54.25091	Guarnizione DN300 Rubber joint DN300	Neoprene Neoprene	-
<b>Type: E</b>				
<b>C</b>	ECDN350	Curva aspirazione 90° Suction elbow 90°	Acciaio zincato Galvanized Steel	199
<b>Type: P</b>				
<b>D</b>	PAPDN300	Tripiede appoggio X foot rest	Acciaio zincato Galvanized Steel	135
<b>Type: R</b>				
<b>G</b>	GADTDN300	Controflangia accoppiamento 2 guide DN300 Double guide rail coupling flange DN300	G250 Ghisa G250 Cast-Iron	40
<b>H</b>	GBPACDN300	Piede d'accoppiamento 2 guide DN300 Double guide coupling feet DN300	G250 Ghisa G250 Cast-Iron	247
<b>I</b>	SOP2T300	Sopperto tubi superiore 2 guide 3" Double guide rail upper support 3"	Acciaio zincato Galvanized Steel	2,6
<b>L</b>	TG3Z	Tubo guida 3" Guide rail 3"	Acciaio zincato Galvanized Steel	-