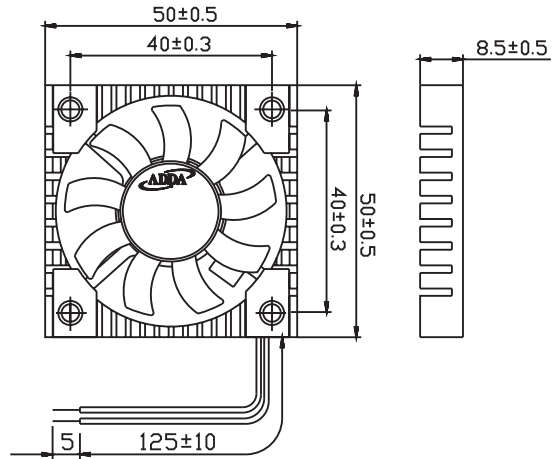
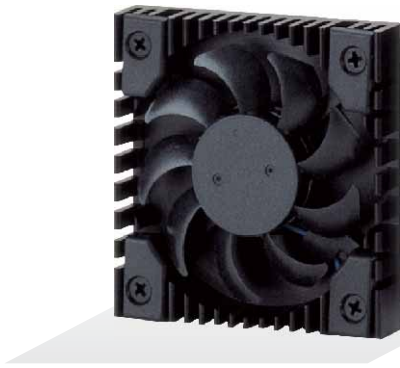




# AP5008 SERIES

## External Dimensions



Frame: Aluminum alloy  
 Impeller: Plastic (UL:94V-0)  
 Lead wire: UL1571AWG28

## Specifications(Nominal)

\*:Noise is measured at the distance of one (1) meter from the axis of intake.

Bearing type: ○=Ball ※=Sleeve ●=Hypro bearing

| Frame size (mm) | Model No.    | Bearing System Type | Rated Voltage (VDC) | Current (A) | Power (W) | Rated Speed (rpm) | Maximum AirFlow (CMM) (CFM) |      | Maximum Pressure (InAq) (mmAq) |      | *Noise Level (dB/A) | Weight (g) |
|-----------------|--------------|---------------------|---------------------|-------------|-----------|-------------------|-----------------------------|------|--------------------------------|------|---------------------|------------|
| 50x50x08        | AP0505LX-J90 | ●                   | 5                   | 0.05        | 0.25      | 4300              | 0.175                       | 6.20 | 0.056                          | 1.40 | 23.0                | 24.0       |
|                 | AP0505MX-J90 | ●                   | 5                   | 0.08        | 0.40      | 5000              | 0.201                       | 7.10 | 0.074                          | 1.85 | 25.5                |            |
|                 | AP0505HX-J90 | ●                   | 5                   | 0.08        | 0.40      | 6300              | 0.260                       | 9.20 | 0.103                          | 2.58 | 32.6                |            |
|                 | AP0512LX-J90 | ●                   | 12                  | 0.05        | 0.60      | 4300              | 0.175                       | 6.20 | 0.056                          | 1.40 | 23.0                |            |
|                 | AP0512MX-J90 | ●                   | 12                  | 0.05        | 0.60      | 5000              | 0.201                       | 7.10 | 0.074                          | 1.85 | 25.5                |            |
|                 | AP0512HX-J90 | ●                   | 12                  | 0.08        | 0.96      | 6300              | 0.260                       | 9.20 | 0.103                          | 2.58 | 32.6                |            |

Specifications subject to change without notice.

The specification for bearing type is for reference only, for more bearing types information, please contact with your ADDA sales representative, thanks!!  
 (網頁上呈現產品軸承資訊均以參考為主，若需其他產品資訊請聯絡您在ADDA的業務代表，謝謝!!)

\*Motor protective circuit and third lead wire functions

|   |   |   |   |   |   |   |   |   |   |   |
|---|---|---|---|---|---|---|---|---|---|---|
| 0 | 1 | 2 | 3 | 4 | 6 | 7 | 8 | 9 | A | B |
| ✓ |   |   |   |   | ✓ |   |   |   |   |   |

\*Safety approvals

|   |   |  |  |   |
|---|---|--|--|---|
|   |   |  |  |   |
| ✓ | ✓ |  |  | ✓ |