

# MOTORI IN CORRENTE CONTINUA

## D.C. MOTORS

SERIE  
Series

# PENTA 4L

<b>W</b>	<b>RPM</b>
<b>900</b>	<b>3000</b>
<b>600</b>	<b>2000</b>

### CARATTERISTICHE GENERALI - Performance characteristics

TIPO MOTORE Motor type	4L 30								4L20								
POTENZA RESA Rated power	P <sub>nom</sub> [W]	900								600							
VELOCITA' NOMINALE Rated speed	N <sub>nom</sub> [rpm]	3000								2000							
COPPIA NOMINALE Rated torque	C <sub>nom</sub> [Nm]	2.86								2.86							
TENSIONE NOMINALE Rated voltage	V <sub>nom</sub> [V]	180	90	60	48	36	24*	12*	180	90	60	48	36	24	12*		
CORRENTE NOMINALE Rated current	I <sub>nom</sub> [A]	6.67	13.33	20.00	25.00	33.33	50.00	100.00	4.44	8.89	13.33	16.67	22.22	33.33	66.67		
COPPIA MASSIMA Peak torque	C <sub>max</sub> [Nm]				14.29							14.29					
CORRENTE MASSIMA Peak current	I <sub>max</sub> [A]	33.3	66.7	100.00	125.0	166.7	250.0	500.0	22.2	44.4	66.7	83.3	111.1	166.7	333.3		
RESISTENZA ARMATURA Armature resistance	R <sub>arm</sub> [Ohm]	1.73	0.69	0.45	0.36	0.28	0.11	0.07	2.50	0.85	0.49	0.53	0.36	0.13	0.09		
INDUTTANZA ARMATURA Armature inductance	L <sub>a</sub> [mH]	7.50	1.88	0.35	0.25	0.12	0.06	0.01	12.70	3.18	1.52	0.48	0.24	0.12	0.02		
COST. TENSIONE Voltage constant	K <sub>e</sub> [V/Krpm]	57.1	27.3	18.2	14.5	10.6	7.1	3.5	81.8	40.9	27.3	21.8	15.9	10.6	5.2		
COST. TEMPO ELET. Elect. time constant	T <sub>e</sub> [ms]	4.34	2.70	0.78	0.67	0.42	0.56	0.13	5.08	3.75	3.08	0.90	0.67	0.90	0.26		
COST. TEMPO MECC. Mech. time constant	T <sub>m</sub> [ms]	16.8	29.7	43.5	54.7	80.2	69.6	193.6	11.9	16.1	21.1	35.5	45.8	37.7	99.9		

\* Solo per servizio intermittente - Intermittent duty only

### DATI MECCANICI - Mechanical data

INERZIA ROTORE Rotor inertia	J <sub>m</sub> [Kgm <sup>2</sup> ]	0.0029
MAX ACC. TEORICA Max theor. Acc.	[Rad/sec <sup>2</sup> ]	4946
CARICO RADIALE MAX Max radial load	R <sub>I</sub> [N]	360
CARICO ASSIALE MAX Max axial load	A <sub>I</sub> [N]	108
PESO MOTORE Motor weight	G [Kg]	8,3
VENTILAZIONE Ventilation	NATURALE T.E.N.V.	
GRADO DI PROTEZIONE Class protection	IP	54

### DATI ELETTRICI - Winding data

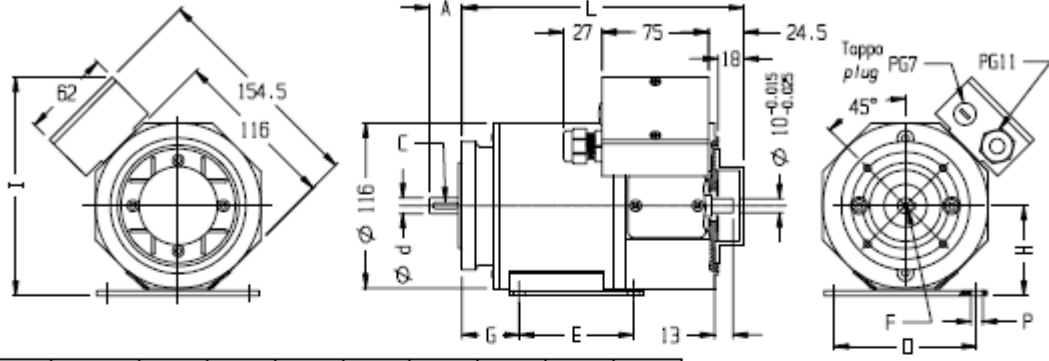
COST. DI TEMPO TERMICO Thermal time constant	T <sub>t</sub> [min]	60
MAX VEL. SENZA CARICO Max no load speed	N <sub>o max</sub> [rpm]	4000
MAX VEL. CON CARICO Max load speed	N <sub>max</sub> [rpm]	3000
CLASSE D'ISOLAMENTO Insulation class	F	
FATTORE DI SERVIZIO Duty cycle	S1	
FATTORE DI FORMA Form factor	FF	1
TEMP. AMBIENTE RIF. DATI Room temp. data refer.	T <sub>rif</sub> [°C]	40°

# PENTA 4

## DIMENSIONI (mm) DIMENSIONS (mm)

**PIEDE**

**FOOT**

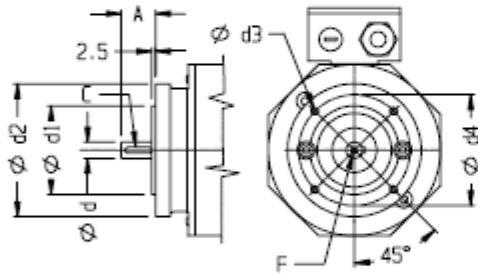


Type	S	M	L
L	197.5	227.5	257.5

Size	A	C	d(h7)	E	F	G	H	I	O	P
63	23	4x4x18	11	80	M4	40	63	153	100	8
71	30	5x5x25	14	90	M5	45	71	161	112	9

**FLANGIA B14**

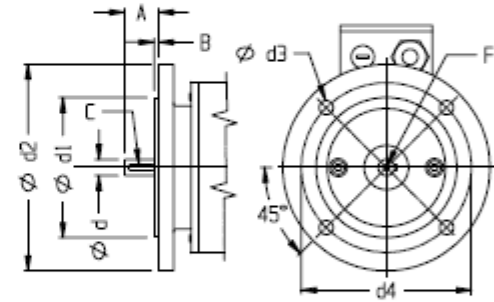
**B14 FLANGE**



Size	A	C	d(h7)	d1(h7)	d2	d3	d4	F
56	20	3x3x15	9	50	80	M5	65	-
63	23	4x4x18	11	60	90	M5	75	M4
71	30	5x5x25	14	70	105	M6	85	M5

**FLANGIA B5**

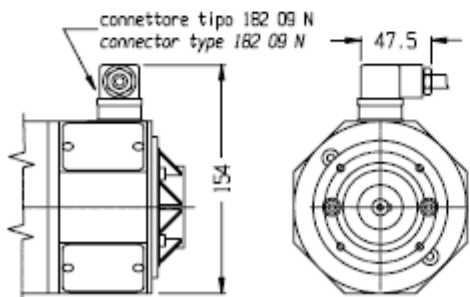
**B5 FLANGE**



Size	A	B	C	d(h7)	d1(h7)	d2	d3	d4	F
56	20	3	3x3x15	9	80	120	8.5	100	-
63	23	3	4x4x18	11	95	140	9.5	115	M4
71	30	3.5	5x5x25	14	110	160	9.5	130	M5

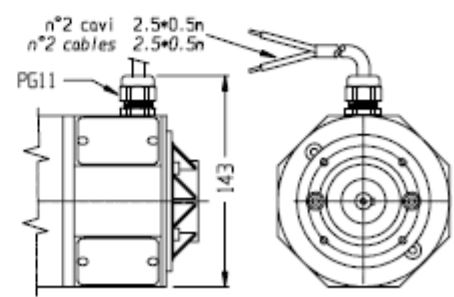
**CONNETTORE**

**CONNECTOR**



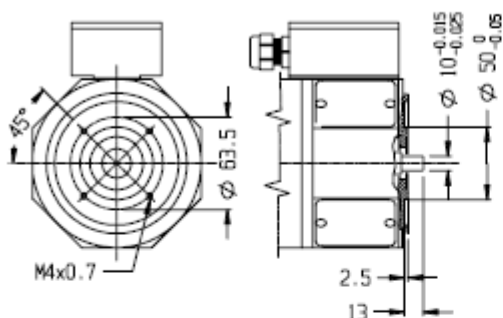
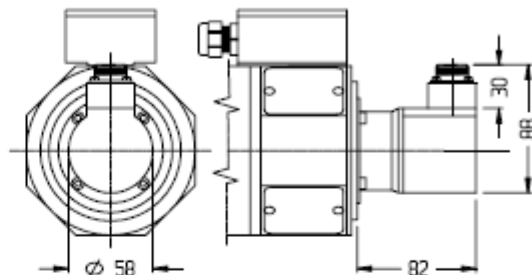
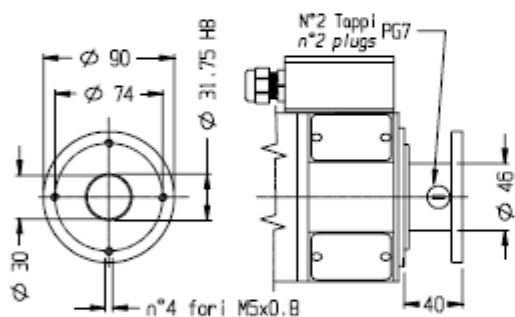
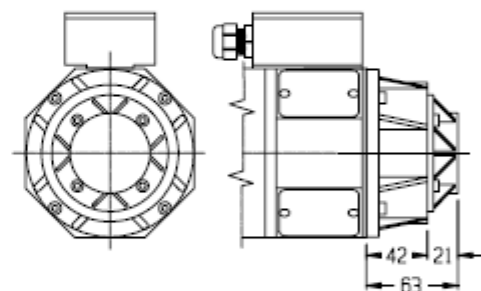
**CAVO**

**FLYING LEADS**

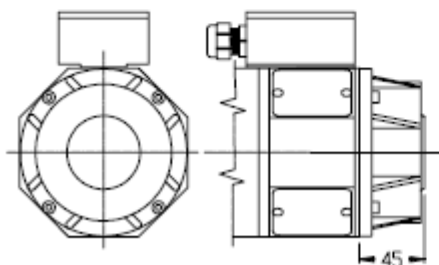


# PENTA 4

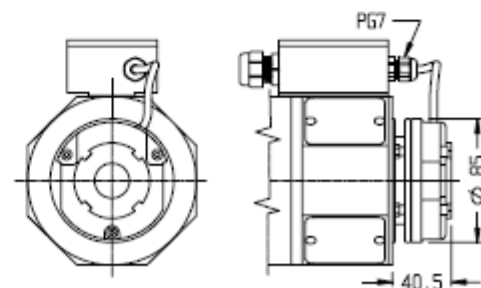
## OPTIONALS

**PRED. ENCODER**    *ENC. PREARRANGEMENT*

**ENCODER EL72**
*EL72 ENCODER*

**DISTANZ. ENC. N°1**
*ENC. SPACER N°1*

**DIN. TACHIMETRICA**
*TACHO GENERATOR*


<b>COSTANTE DI TENSIONE</b> VOLTAGE CONSTANT	10±5% V/KRPM	<b>CORRENTE NOMINALE</b> RATED CURRENT	2 mA
<b>VELOCITA' MASSIMA</b> MAX SPEED	9000 RPM	<b>CORRENTE MASSIMA</b> MAX CURRENT	8 mA

**FRENO N°1: 1,7 Nm**
*BRAKE N°1: 1,7 Nm*


<b>COPPIA STATICA</b> STATIC TORQUE	1,7 Nm	<b>CORRENTE</b> CURRENT	0.46-0.058 A
<b>TENSIONE DI ALIMEN.</b> POWER SUPPLY VOLTAGE	24-190 V.c.c.	<b>POTENZA ASSORBITA</b> INPUT POWER	11 W

**FRENO N°2: 4 Nm**
*BRAKE N°2: 4 Nm*


<b>COPPIA STATICA</b> STATIC TORQUE	4 Nm	<b>CORRENTE</b> CURRENT	0.83-0.109 A
<b>TENSIONE DI ALIMEN.</b> POWER SUPPLY VOLTAGE	24-190 V.c.c.	<b>POTENZA ASSORBITA</b> INPUT POWER	20 W