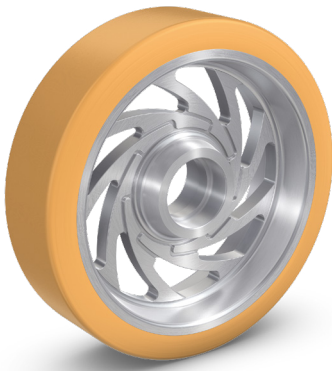


# Technical Information

## VULKOLLAN® 95 Shore A



### VULKOLLAN® 95 Shore A

VULKOLLAN® 95 Shore A is a highly elastic polyurethane elastomer based on DESMODUR® 15\* for demanding and dynamic areas of application. The excellent mechanical properties of the material include very high dynamic load capacity, very high abrasion resistance and tear growth resistance, very high mechanical wear resistance and very low compression set. We recommend VULKOLLAN® 95 Shore A for use in

the transport of very heavy loads and at high speeds.

- Long service life
- Higher load capacities
- Very high speeds
- Minimal flat spots

Technical Information	Standard		Unit	Value
Hardness	DIN ISO	7619-1	Shore A	95 (± 3)
Density	DIN EN ISO	1183-1	g/cm <sup>3</sup>	approx. 1.2
Elongation at break	DIN	53 504	%	approx. 640
Stress value at 100%	DIN	53 504	MPa	10,5–11
Rebound resilience	DIN	53 512	%	55–60
Determination of tear strength	DIN ISO	34-1	kN/m	70–75
Compression set 70 h, 23°C	DIN ISO	815-1	%	12–14
Abrasion resistance	DIN ISO	4649	mm <sup>3</sup>	37
Coefficient of friction (traction) on wet floor at 8000 N			- -	0.09
Rolling resistance at 20°C of charge (average)			%	0.75–0.85
Starting resistance at 20°C of charge (average)			%	1.0–1.3

All values indicated in this table are approximative values resulting from our own tests or information given by our raw material suppliers. The standardised tests refer to special test samples. Therefore these values are not directly applicable to wheels and castors. Furthermore these values change under such influences as temperature, humidity, duration of charge, rate of deformation, etc.

For more information please visit [www.raedervogel.de](http://www.raedervogel.de).

No legal obligation.

\*VULKOLLAN® and DESMODUR® are registered trademarks of the Covestro Group.