

**ILC-1000**  
Intelligent Logic Control

**Disks**

- Disk 1
- Disk 2

**Interface**

- Net1
- Net2
- DIM3
- ALK
- PS1
- PS2
- OS
- J1-T1

**Powersupply**

- Intern (GND) 191
- 17 • 5V
- 18 • 12V
- 19 • 12V
- Extern 1 (GND) 192
- 14 • 5V
- 15 • 12V
- 16 • 12V
- Extern 2 (GND) 193
- 31 • 5V
- 12 • 5V
- 13 • 5V
- Extern 3 (GND) 194
- 28 • 5V
- 2 • Power ok
- 37 • 19
- 20 • 1

**Interface**

- AN01
- AN02
- AN03
- AN04

Vertical panel with multiple ports and connectors, including a section labeled "Powersupply" with various voltage outputs and a "Power ok" indicator.

Horizontal panels with multiple ports and connectors, including a section labeled "Powersupply" with various voltage outputs and a "Power ok" indicator.

Bottom section of the rack containing dense bundles of cables and connectors, likely for power and data distribution.

**ILC-1000**  
Intelligent Logic Control

**Disks**

- Disk 1
- Disk 2

**Powersupply**

- Intrn (GND19)
- 37 • 5V
- 18 • 12V
- 36 • 12V
- Exam 1 (GND16)
- 34 • 5V
- 15 • 12V
- 33 • 12V
- Exam 2 (GND13)
- 31 • 5V
- 12 • 15V
- 30 • 15V
- Exam 3 (GND10)
- 28 • 5V
- 2 • Power clk
- 37 19
- 20 1

**Interface**

Net1 Net2

COM2 AUX

1 3

Z X U C AN01 AN02 AN03 AN04

16 A07 A08

PS1 PS2 S5

AN01 AN02 AN03 AN04

SL

**electronic und software**



28359 Bremen · West-Germany

Typ:	ILC-1000 SE	V2.0
Serien-Nr.:	09198	

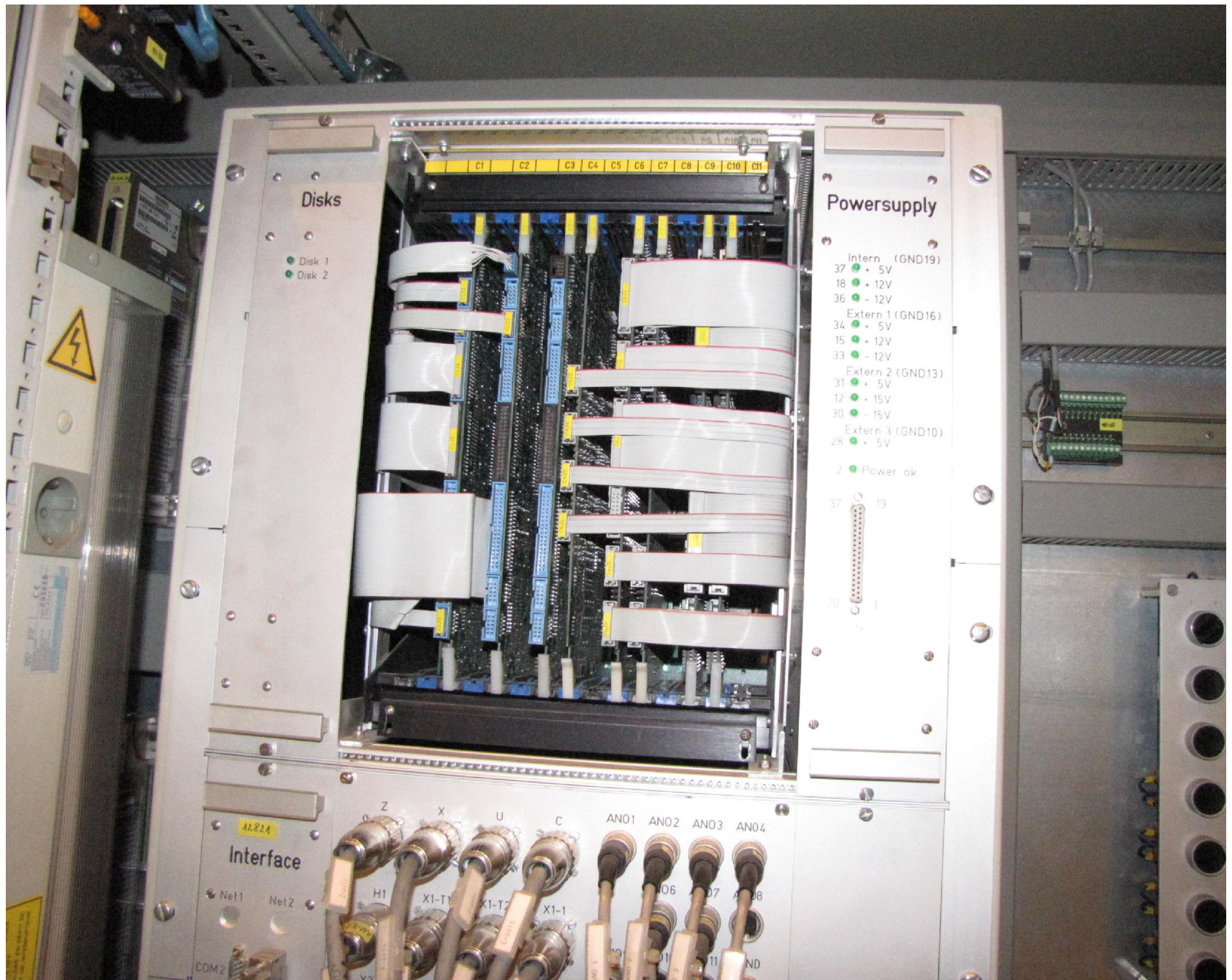
220 Volt

D107

P

SL





### Disks

- Disk 1
- Disk 2

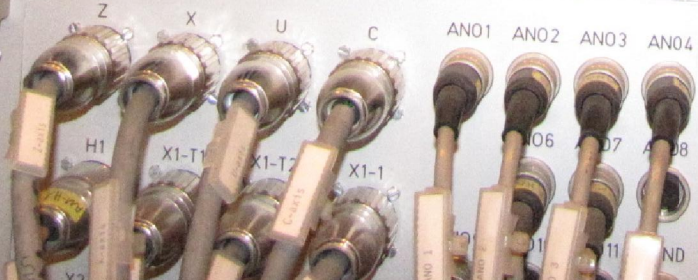
### Powersupply

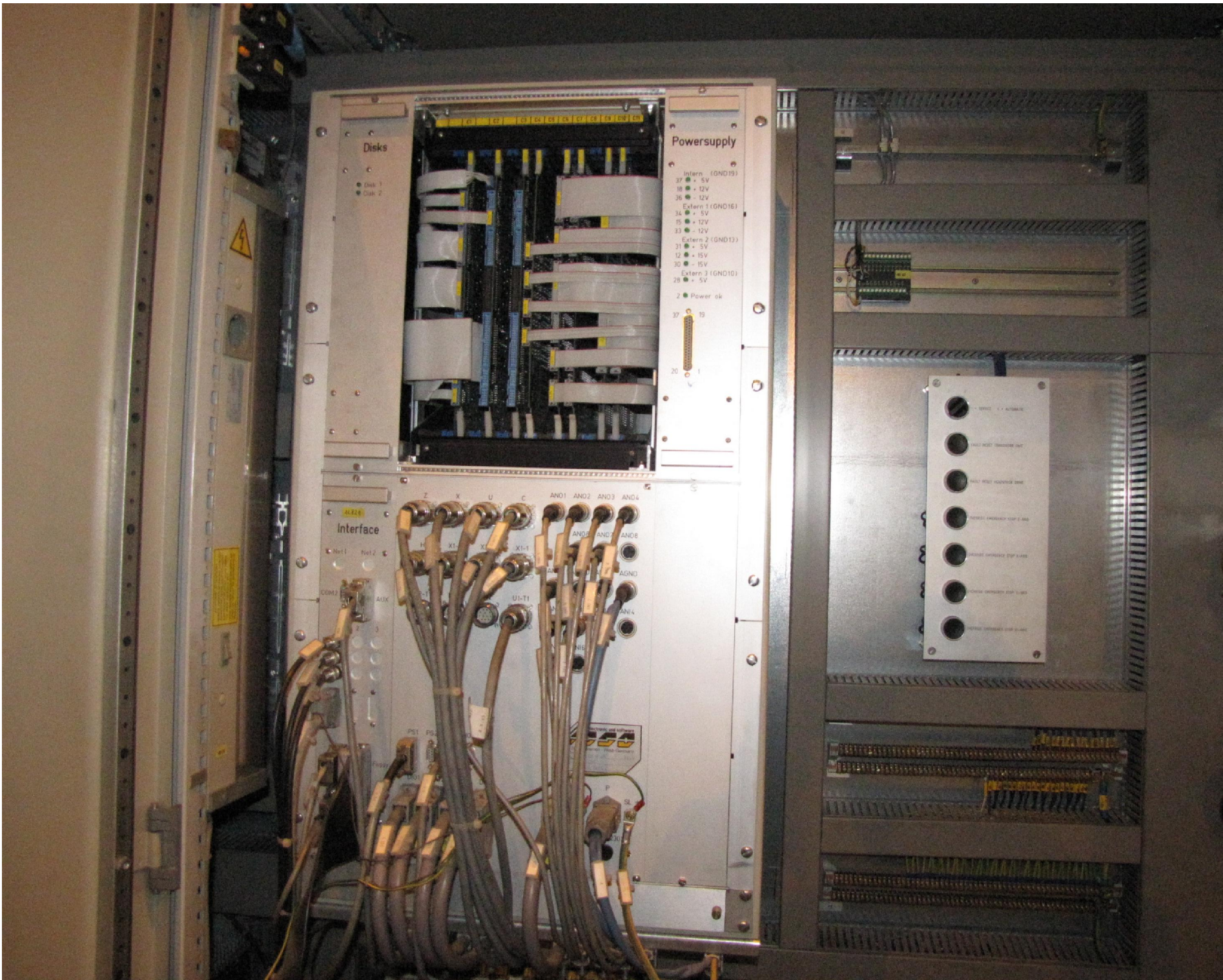
- Intern (GND19)
  - 37 ● + 5V
  - 18 ● + 12V
  - 36 ● - 12V
- Extern 1 (GND16)
  - 34 ● + 5V
  - 15 ● + 12V
  - 33 ● - 12V
- Extern 2 (GND13)
  - 31 ● + 5V
  - 12 ● - 15V
  - 30 ● - 15V
- Extern 3 (GND10)
  - 28 ● + 5V
- 2 ● Power ok



### Interface

- Net1
- Net2





Disks

- Disk 1
- Disk 2

Powersupply

- Intern (GND19)
  - 37 • + 5V
  - 18 • + 12V
  - 26 • + 12V
  - Extern 1 (GND16)
  - 14 • + 5V
  - 15 • + 12V
  - 33 • + 12V
  - Extern 2 (GND13)
  - 31 • + 5V
  - 12 • + 15V
  - 30 • + 15V
  - Extern 3 (GND10)
  - 28 • + 5V
  - 2 • Power ok
- 37 19  
20 1

Interface

- AC220
- Net1 Net2
- COM2
- AUX
- PS1 PS2
- U1-T1
- U1-T2
- U1-T3
- U1-T4
- U1-T5
- U1-T6
- U1-T7
- U1-T8
- U1-T9
- U1-T10
- U1-T11
- U1-T12
- U1-T13
- U1-T14
- U1-T15
- U1-T16
- U1-T17
- U1-T18
- U1-T19
- U1-T20
- U1-T21
- U1-T22
- U1-T23
- U1-T24
- U1-T25
- U1-T26
- U1-T27
- U1-T28
- U1-T29
- U1-T30
- U1-T31
- U1-T32
- U1-T33
- U1-T34
- U1-T35
- U1-T36
- U1-T37
- U1-T38
- U1-T39
- U1-T40
- U1-T41
- U1-T42
- U1-T43
- U1-T44
- U1-T45
- U1-T46
- U1-T47
- U1-T48
- U1-T49
- U1-T50
- U1-T51
- U1-T52
- U1-T53
- U1-T54
- U1-T55
- U1-T56
- U1-T57
- U1-T58
- U1-T59
- U1-T60
- U1-T61
- U1-T62
- U1-T63
- U1-T64
- U1-T65
- U1-T66
- U1-T67
- U1-T68
- U1-T69
- U1-T70
- U1-T71
- U1-T72
- U1-T73
- U1-T74
- U1-T75
- U1-T76
- U1-T77
- U1-T78
- U1-T79
- U1-T80
- U1-T81
- U1-T82
- U1-T83
- U1-T84
- U1-T85
- U1-T86
- U1-T87
- U1-T88
- U1-T89
- U1-T90
- U1-T91
- U1-T92
- U1-T93
- U1-T94
- U1-T95
- U1-T96
- U1-T97
- U1-T98
- U1-T99
- U1-T100

- RESET
- ALARM
- FAULT RESET TRANSMIT OUT
- FAULT RESET RECEIVE IN
- REMOTE MANAGEMENT STOP 1-000
- REMOTE MANAGEMENT STOP 1-000
- REMOTE MANAGEMENT STOP 1-000
- REMOTE MANAGEMENT STOP 1-000
- REMOTE MANAGEMENT STOP 1-000