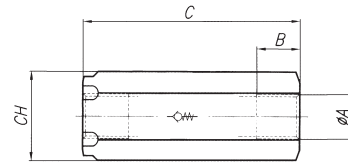


IN-LINE DIRECTIONAL CONTROL VALVES type FT

FT 257/6 CHECK VALVES

- Direct acting check valves, poppet type
- BSP thread ports for in-line assembly
- Body, poppet and spring in steel
- Maximum operating pressure: 320 bar
- Poppet release pressure: 0,35 bar (different settings available on request)
- Outer section for easier assembly with hexagonal spinner

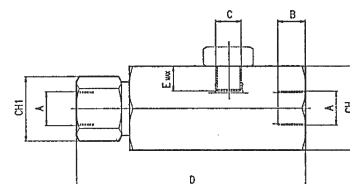
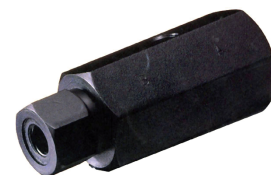


PERFORMANCE DATA						
ORDERING CODE	Symbol	Ports (ØA)	Q _{MAX} (l/min)	B	C	CH
FT 257/6-14		1/4" BSP	16	12,5	63	22
FT 257/6-38		3/8" BSP	30	12,5	69	27
FT 257/6-12		1/2" BSP	60	12,5	80,5	32
FT 257/6-34		3/4" BSP	100	17	99,5	36
FT 257/6-1		1" BSP	160	20	117	46
FT 257/6-114		1-1/4" BSP	250	22	134,5	55

Subject to technical and dimensional changes without notice
Available on request port sizes 1-1/2" BSP - 2" BSP

FT 257/7 PILOT OPERATED CHECK VALVES

- Pilot operated check valves, poppet type
- BSP thread ports for in-line assembly
- Pilot port: 1/4" BSP
- Body, poppet and spring in steel
- Maximum operating pressure: 320 bar
- Outer section for easier assembly with hexagonal spinner

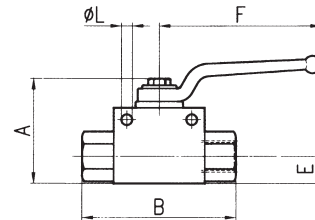


PERFORMANCE DATA									
ORDERING CODE	Symbol	Ports (ØA)	Q _{MAX} (l/min)	Pilot ratio	B	D	E	CH	CH1
FT 257/7-14		1/4" BSP	16	1 / 5,3	12,5	100	12	38	28
FT 257/7-38		3/8" BSP	30	1 / 5	12,5	115	12	41	34
FT 257/7-12		1/2" BSP	60	1 / 5,3	15,5	139	12	46	41

Subject to technical and dimensional changes without notice - Available on request port
Available on request port sizes 3/4" BSP - 1" BSP - 1-1/4" BSP

FT 221/* SHUT-OFF VALVES

- Shut-off valves, ball type
- BSP thread ports for in-line assembly
- Available 2-way or 3-way executions (see symbol)
- Body in steel
- Lever and ball in chromium-plated steel
- Maximum pressure: 500 bar
- PTFE ball seals

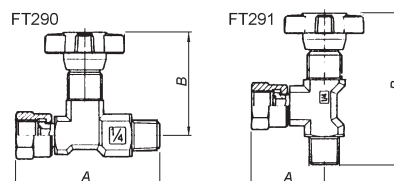


PERFORMANCE DATA								
ORDERING CODE	Symbol	Ports	Q _{MAX} (l/min)	A	B	E	F	ØL
FT 221/1-14		1/4" BSP	16	44,5	71	13	115	4,5
FT 221/1-38		3/8" BSP	30	50	72	16,5	115	5,5
FT 221/1-12		1/2" BSP	60	51	83	17	115	6,5
FT 221/1-34		3/4" BSP	100	71,5	97	24	160	6,5
FT 221/1-1		1" BSP	160	76	113	26,5	160	6,5
FT 221/1-114		1-1/4" BSP	250	106	110	35	200	n.a.
FT 221/3-14		1/4" BSP	16	44,5	71	13	115	M4
FT 221/3-38		3/8" BSP	30	50	72	16,5	115	M4
FT 221/3-12		1/2" BSP	60	51,5	85	17,5	115	M5

Subject to technical and dimensional changes without notice
Available on request port sizes 1-1/2" BSP - 2" BSP

FT 29* SHUT-OFF VALVES

- Shut-off valves, needle type
- BSP thread ports for in-line assembly
- Body, needle and spring in steel
- Maximum operating pressure: 400 bar



PERFORMANCE DATA				
ORDERING CODE	Symbol	Ports	A	B
FT 290		1/4" BSP	61,5	45
FT 291		1/4" BSP	30	66

Subject to technical and dimensional changes without notice