

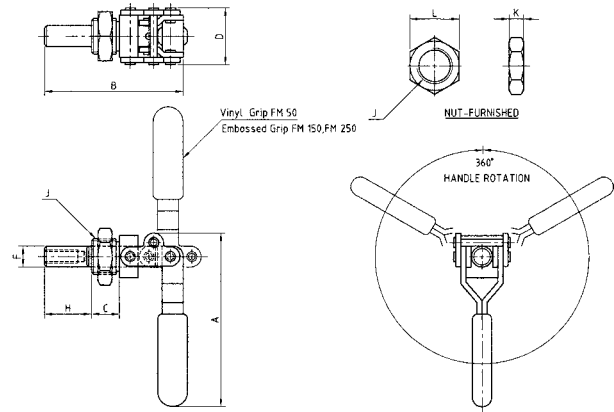
Flush Mounted



STRAIGHT LINE ACTION

FM 50
FM 150
FM 250

As these Flush Mounted Action clamps have free handle, clamping can be made at free position. It is widely applicable and workable for push and pull action. Equipped with red vinyl grip for FM 50 and red embossed handle grips for FM 150 and FM 250.

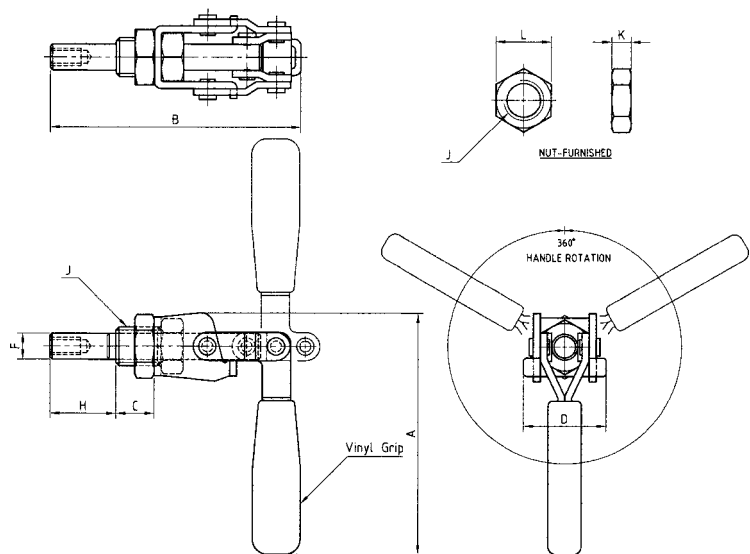
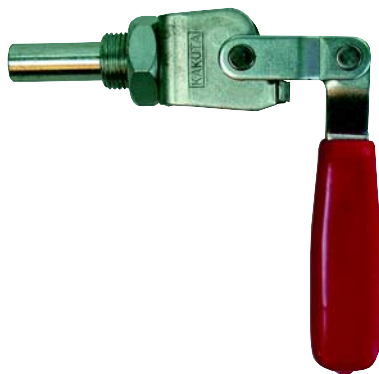


Also Available in
Stainless Steel
FM 50-2S
FM 150-2S

Model	A	B	C	D	F	H	J	K	L	Holding Capacity	Shipping Weight	Plunger Travel	Plunger Thread
FM 50	78	62	12.6	26.5	9.5	20.5	M16X1.50	6	22	90 Kg	103 g	19	M6X1.00
FM 150	107.8	107.3	15.9	31.6	11	38.4	M20X1.50	6	25.4	150 Kg	260 g	38.1	M8X1.25
FM 250	142	170.7	22.2	48.1	16	69.8	M27X2.00	6.4	38	320 Kg	757 g	66.7	M10X1.50

FM 150-1

This medium size of Flush Mounted Action clamp is similar to FM 150 but larger handle grip for operation comfort.



Model	A	B	C	D	F	H	J	K	L	Holding Capacity	Shipping Weight	Plunger Travel	Plunger Thread
FM 150-1	111	115.3	17.6	39	12	30.3	M18X1.50	9	25.4	150 Kg	380 g	26.3	M8X1.25

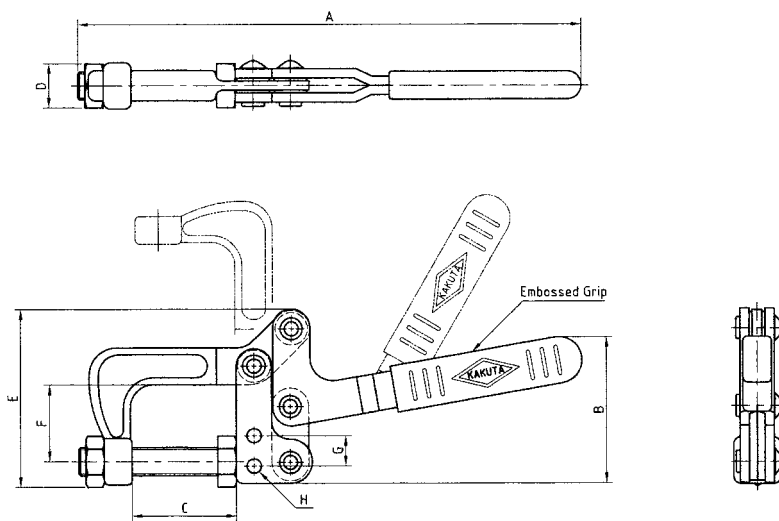
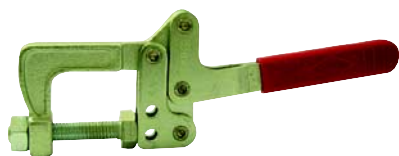
Plier



SQUEEZE ACTION

SA 2

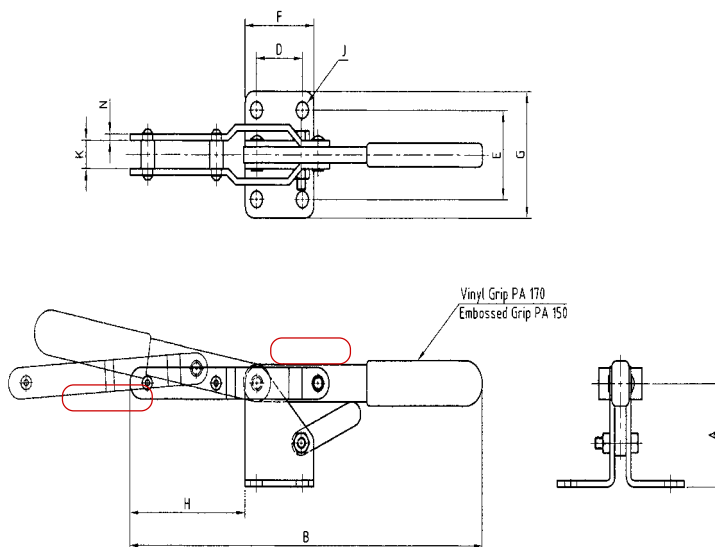
Forged high carbon steel jaw moves 90°. Equipped with red embossed handle grip and hex head spindle.



Model	A	B	C	D	E	F	G	H	Holding Capacity	Shipping Weight	Plunger Travel	Plunger Thread
SA 2	216.7	63	45	19	76.5	33	13	6.7	400 g	518 g	90°	50°

SA 150 SA 155-2

Forged steel clamp for small jobs requiring squeeze action. One vinyl coated spindle assembly is supplied with SA 150 but two vinyl coated spindle assemblies for SA 155-2.



Model	A	B	C	D	E	F	Holding Capacity	Shipping Weight
SA 150	49.2	113.5	25.4	12.7	52.4	28.6	90 Kg	157 g
SA 155-2	49.2	113.5	25.4	12.7	52.4	28.6	90 Kg	157 g

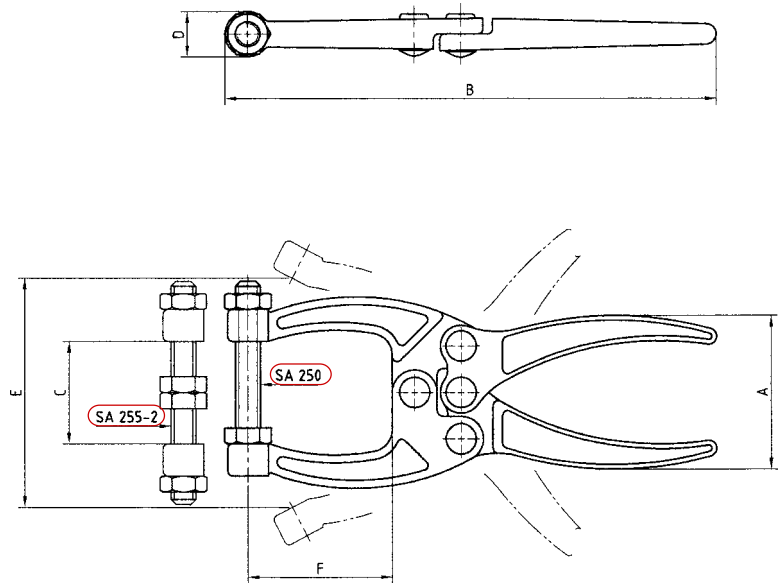
Plier



SQUEEZE ACTION

SA 250 SA 255-2

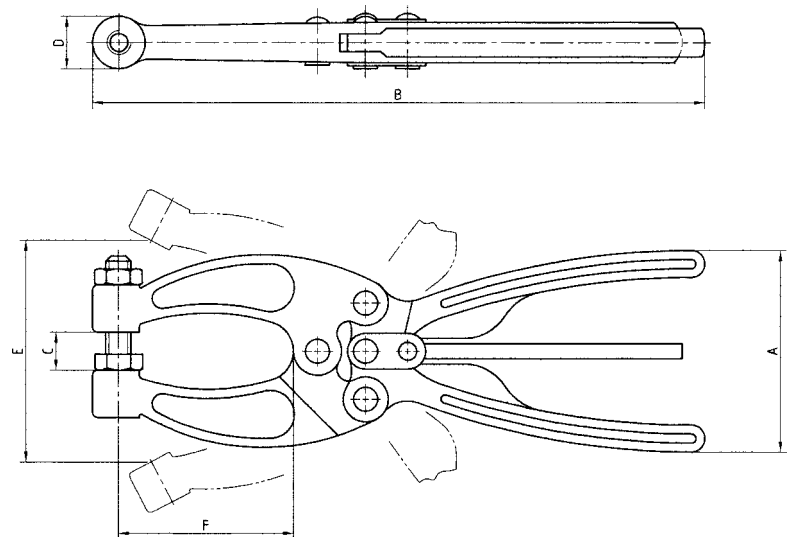
Forged steel clamp is offering medium range holding pressure and compact size. SA 250 is furnished with one hex head spindle assembly. Two hex head spindle assemblies are supplied with SA 255-2.



Model	A	B	C	D	E	F	Holding Capacity	Shipping Weight
SA 250	47.6	152.4	31.7	12.7	71.1	45	160 Kg	253 g
SA 255-2	47.6	152.4	31.7	12.7	71.1	45	160 Kg	253 g

SA 350

Compact, narrow jaw forged steel clamp for application in confined area. Fast open with two-way release lever. Supplied with a hex-head spindle assembly.



Model	A	B	C	D	E	F	Holding Capacity	Shipping Weight
SA 350	67	203	12.7	17.5	73	58	318 Kg	546 g

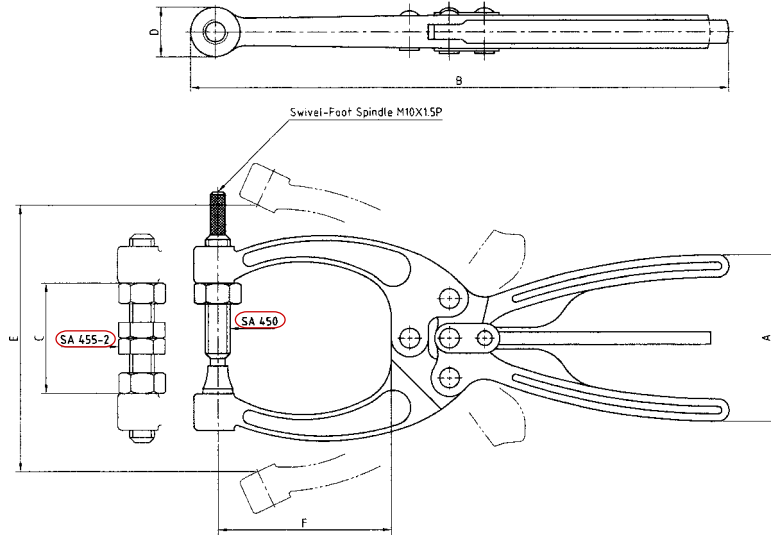
Plier



SQUEEZE ACTION

SA 450 SA 455-2

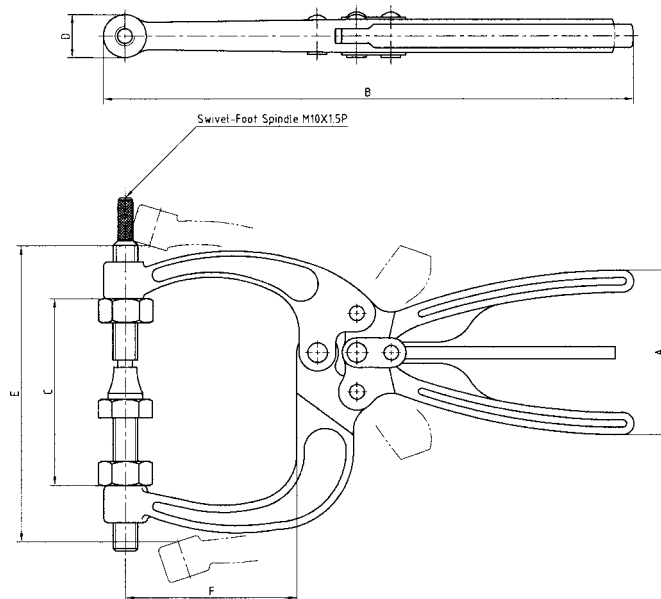
The most universal forged steel clamp in the line. Fast open with two-way release lever. SA 450 is equipped with a swivel foot assembly. SA 455-2 is supplied with two hex-head spindle assemblies.



Model	A	B	C	D	E	F	Holding Capacity	Shipping Weight
SA 450	67	216	44.5	17.5	108	70	318 Kg	596 g
SA 455-2	67	216	44.5	17.5	108	70	318 Kg	596 g

SA 550

Made of forged steel for heavy duty application. Dual spindles to centralize jaws on work piece. Furnished with one swivel foot spindle assembly and one hex-head spindle assembly. Quick open with two-way release lever.

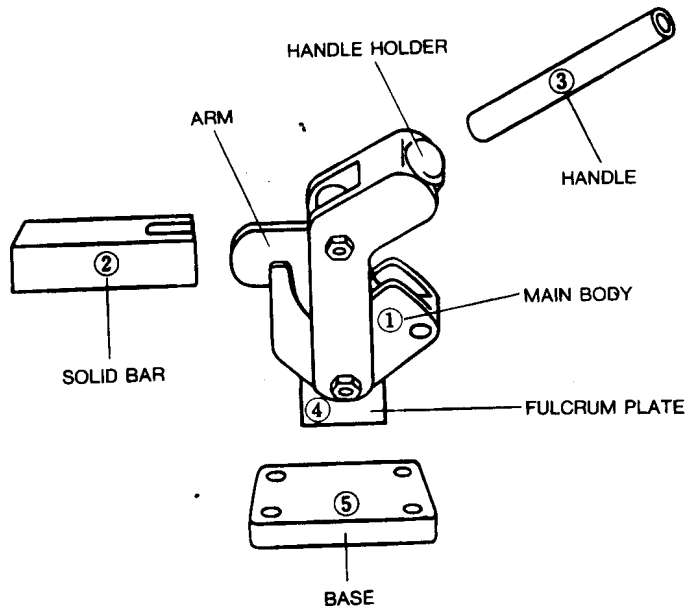


Model	A	B	C	D	E	F	Holding Capacity	Shipping Weight
SA 550	67	216	76	17.5	120.6	70	318 Kg	695 g

Vari Clamp (Heavy Duty Vertical Clamp)



HOLD DOWN ACTION



(APPLICATION FOR VARI-CLAMP)

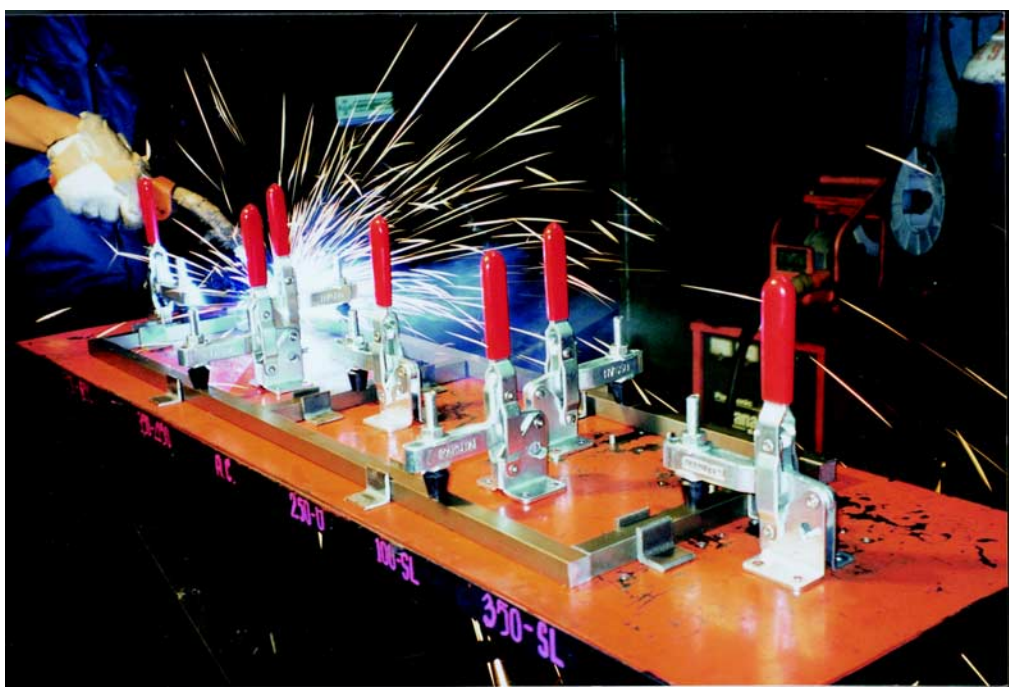
The left figure shows that vari-clamp consists of handle, main body, base and solid BAR.

1. Determine the fixing point of main body.
2. Determine length of solid bar and weld it with arm.
3. Considering space between jig and clamp, determine height of handle and weld handle with handle holder.
4. Determine angle of main body and fulcrum plate and weld them.
5. Determine clamp fixing method to jig. In case of using the base, weld the base with fulcrum plate.

After assembling vari-clamp by the above steps, the vari-clamp becomes available.

*** As method of assembling vari-clamp can be decided in accordance with working conditions, vari-clamp is applicable widely and used at many working spots.*

*** As pin and bush composing fulcrum are finished by heat treatment (Hardness : H.R.C. 60) they are assembled so that abrasion is avoidable. Accordingly, vari-clamp is most suitable for jigs that are used frequently and required accuracy.*



Vari Clamp (Heavy Duty Vertical Clamp)



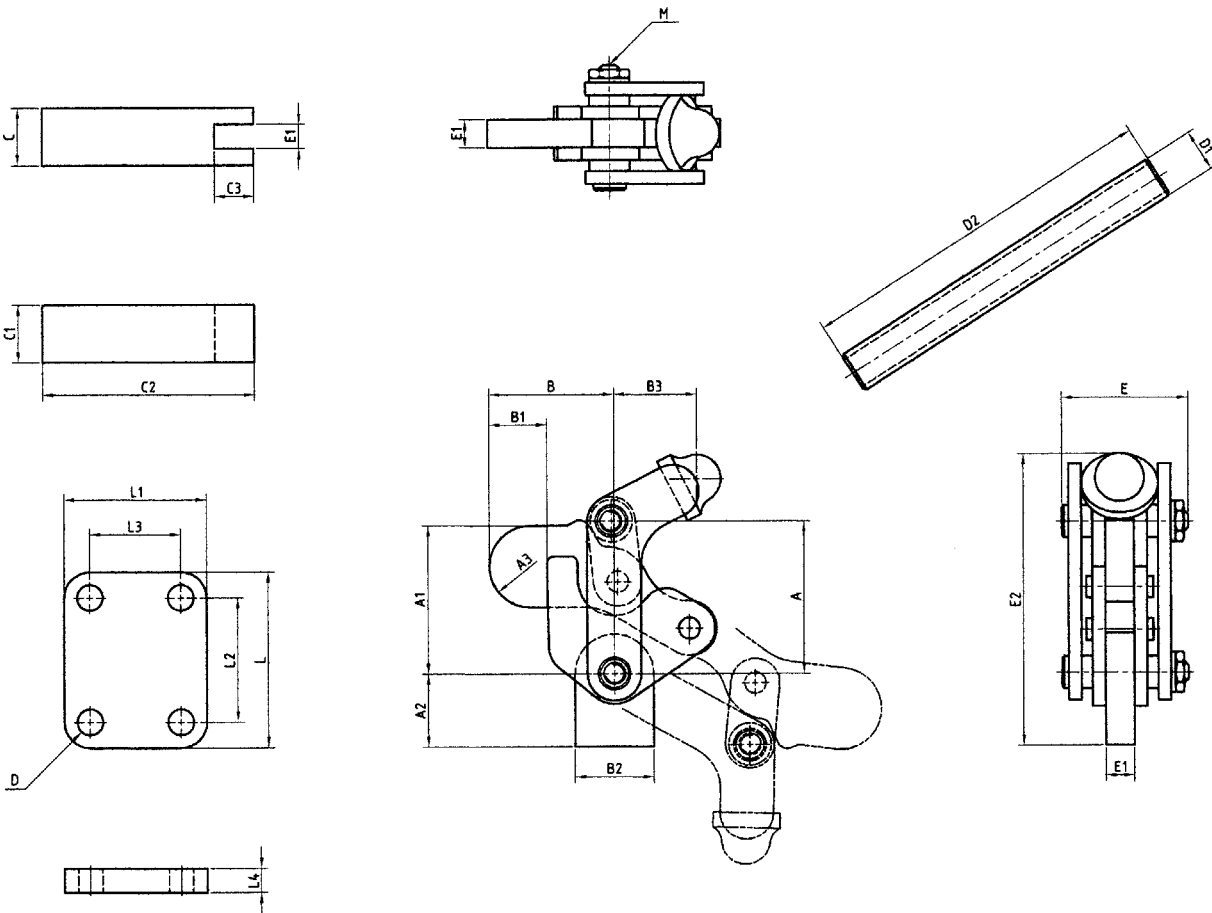
HOLD DOWN ACTION

VARI No. 1
VARI No. 2
VARI No. 3

Designed for heavy duty work especially for automotive production line. Clamp furnished with base, arm and handle pipe as complete set for being weld to suit the application.

Raw Material: SS 41

Model	Holding Capacity	Shipping Weight	Handle Move	Bar Moves
VARI No. 1	200 Kg	845 g	116°	187°
VARI No. 2	500 Kg	2130 g	120°	200°
VARI No. 3	1000 Kg	4100 g	120°	200°



Model	A	A1	A2	A3	B	B1	B2	B3	C	C1	C2	C3	D	D1	D2	E	E1	E2	L	L1	L2	L3	L4	M
VARI No. 1	50	48.9	24	13.5	41.2	19	26	27.3	19	19	70	13	8.5	13.7	120	39	8	96.30	58	47	41	30	8	M6X1.00
VARI No. 2	70	76	32	22.5	50.5	23.7	35	32.6	25	25	100	23	11.5	22	137	58	13	135	80	60	60	40	11.5	M8X1.25
VARI No. 3	92	107.9	36	27	57	24	53	37.6	28	28	125	28	13.5	22	150	70	16	164.4	100	82	75	55	12	M10X1.50

Vari Clamp (Heavy Duty Vertical Clamp)



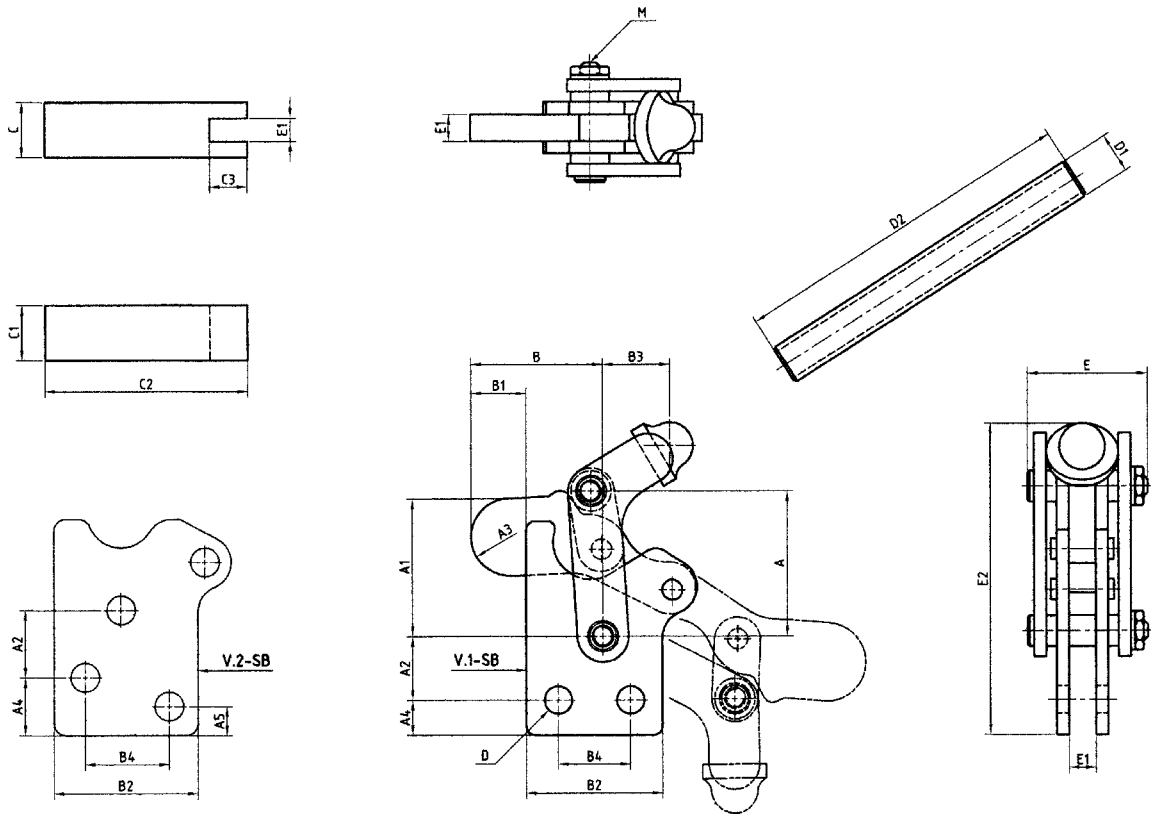
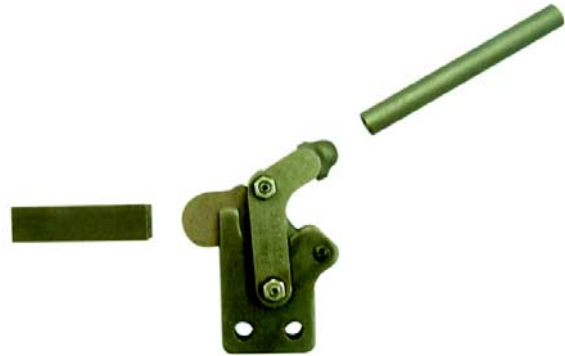
HOLD DOWN ACTION

VARI No. 1 SB VARI No. 2 SB

Identical to V. 1 and V. 2 except straight base.

Raw Material: SS 41

Model	Holding Capacity	Shipping Weight	Drawing Movement	Bar Moves
VARI No. 1SB	200 Kg	745 g	116°	187°
VARI No. 2SB	500 Kg	1940 g	120°	190°



Model	A	A1	A2	A3	A4	A5	B	B1	B2	B3	B4	C	C1	C2	C3	D	D1	D2	E	E1	E2	M
VARI NO. 1SB	50	47.8	22	13.5	12	-	45.5	19	47	23.3	25	19	19	70	13	9.5	13.7	120	39	8	107.9	M6X1.00
VARI NO. 2SB	70	76	28	22.5	24	12	50.5	22.5	60	32.6	35	25	25	100	23	12	22	137	58	13	155	M8X1.25