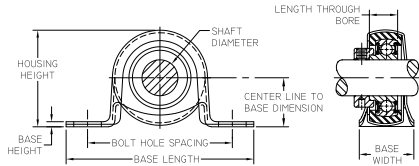


## TIMKEN RPB Series Stamped Steel 2-Bolt Ball Bearing Pillow Block

Designed for extra light-duty applications to provide the advantages of ball bearings at a low cost. The unit consists of a two-piece, separable, zinc-plated steel housing with spherical bearing seat. This allows the spherically ground bearing initial self-alignment in all directions.



### Applications:

- Agriculture
- Fans and blowers
- Food processing
- Conveyors

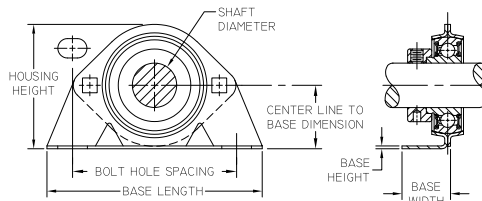
**Bearing Design:** Non-Expansion  
**Housing Material:** Stamped Steel  
**Locking Device:** Eccentric Locking Collar  
**Insert Type:** Steel Insert

Inch  
2 Bolt Holes

Shaft Dia. (in)	Center Line to Base (in)	Bolt Hole Range (in)	Base Length (in)	Base Height (in)	Base Width (in)	Housing Height (in)	Bearing Insert	Non-Relubricatable	
								Item No.	Mfr. No.
1/2	1	2 1/2 to 3 1/2	4 1/8	0.120	1	2 1/16	RA008RRB	101020213	RPB1/2
5/8	1	2 1/2 to 3 1/2	4 1/8	0.120	1	2 7/32	RA010RRB	102171884	RPB5/8
3/4	1 1/8	2 13/16 to 3 5/16	4 1/2	0.160	1 1/8	2 7/32	RA012RRB	101020214	RPB3/4
1	1 5/16	3 to 4 1/8	4 7/8	0.145	1 1/4	2 5/8	RA100RRB	101020212	RPB1
1 3/16	1 5/16	3 to 4 1/8	4 7/8	0.145	1 1/4	2 5/8	RAL103NPPB	101019989	LRPB1 3/16

## TIMKEN PBS Series Stamped Steel Pillow Block

An economical, versatile power transmission unit designed for light-duty, moderate-speed requirements. The housing consists of two heavy-gauge, zinc-plated steel stampings. Made with a precision bearing seat in which dimensions are held to close tolerances to provide an accurate bearing-to-housing fit and to ensure proper alignment of the parts. The base-to-center height and bolt spacing of PBS units make them readily interchangeable with many standard pillow blocks on the market.



### Applications:

- Agriculture
- Fans and blowers
- Food processing
- Conveyors

**Bearing Design:** Non-Expansion  
**Housing Material:** Stamped Steel  
**Locking Device:** Eccentric Locking Collar  
**Insert Type:** Steel Insert

Inch  
2 Bolt Holes

Outer Ring Size	Shaft Dia. (in)	Center Line to Base (in)	Bolt Hole Spacing (in)	Base Length (in)	Base Height (in)	Base Width (in)	Housing Height (in)	Bearing Insert	Relubricatable	
									Item No.	Mfr. No.
203	5/8	1 3/16	3 5/8	4 7/8	0.104	1	2 11/32	RA010RRB	101020055	PBS5/8
204	3/4	1 5/16	3 13/16	5	0.119	1	2 11/16	RA012RRB	101020054	PBS3/4
205	1	1 7/16	3 3/4	5 1/4	0.134	1	2 27/32	RA100RRB	101020051	PBS1
206	1 1/4	1 11/16	4 11/16	6 1/4	0.134	1 3/16	3 11/32	RA103RRB2	101020053	PBS1 1/4S
207	1 1/4	1 7/8	5	6 1/2	0.149	1 3/8	3 23/32	RA103RRB2	101020052	PBS1 1/4

## SEALMASTER ER Series Bearing

Designed to be mounted in a customer's housing.



### Features:

- Patented, felt-lined flinger seal
- 120° setscrew position
- Precision-ground, diamond-faceted setscrews
- Unique metal land riding retainer
- Zone-hardened inner race
- Permanent metal nameplate
- Black oxide, corrosion-resistant race
- Differentiated lubrication and sealing system
- Superior shaft stability
- 52100 high quality bearing steel
- Exclusive locking pin and dimple system
- Extra wide inner and outer race

### With Snap Ring

I.D. (in)	O.D. (in)	Width (in)	Double Sealed	
			Item No.	Mfr. No.
1/2	1.8504	1 7/32	100737335	ER-8
5/8	1.8504	1 7/32	101178317	ER-10
3/4	1.8504	1 7/32	100737336	ER-12
7/8	2.0472	1 3/8	100737338	ER-14
1	2.0472	1 3/8	100737339	ER-16
1 1/8	2.4409	1 1/2	100737342	ER-18
1 3/16	2.4409	1 1/2	100737343	ER-19
1 1/4	2.8347	1 11/16	100737344	ER-20
1 3/8	2.8347	1 11/16	101178347	ER-22
1 7/16	2.8347	1 11/16	100000303	ER-23
1 1/2	3.1496	1 15/16	100000304	ER-24
1 3/4	3.3465	1 15/16	100737349	ER-28
1 15/16	3.5433	2 1/32	100737351	ER-31
2	3.9370	2 3/16	100737350	ER-32
2 3/16	3.9370	2 3/16	100000305	ER-35
2 7/16	4.3307	2 9/16	100000306	ER-39
2 15/16	5.1181	3 1/16	100737355	ER-47
3 7/16	5.9055	3 3/8	101178408	ER-55