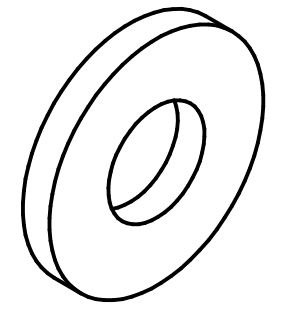
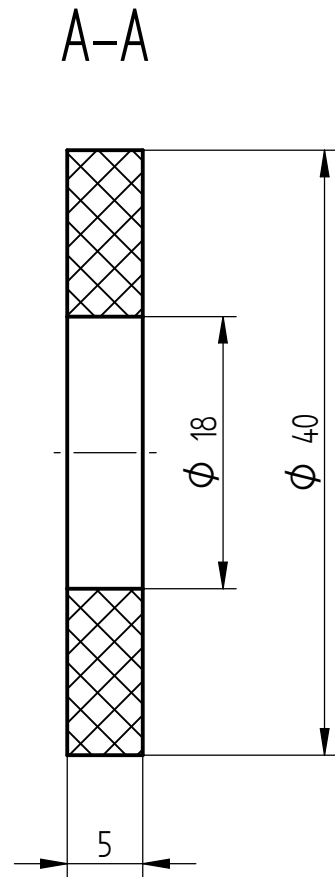
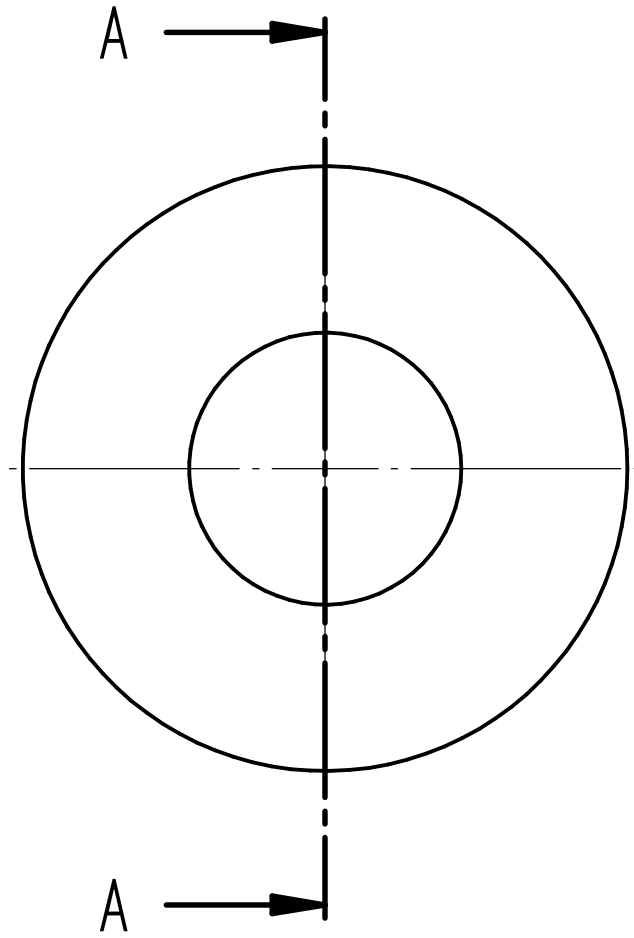


All cited standards refer to the version valid at creation date of this drawing

The copyright, other intellectual property rights and the exclusive right of use of the present document (and its content) remains with the Primetals Technologies Legal Entity being party to the respective order. Copying, adapting, reproducing, distributing and/or communicating to the public and/or third parties without the written consent of the respective Primetals Technologies Legal Entity is strictly forbidden. Any infringement will be prosecuted to full extent of the applicable law.



1:1

Werkstueckkanten Corners	ISO 13715 +0.3 +0.1 -0.5 -0.3

VALID STANDARDS UNLESS OTHERWISE SPECIALLY NOTED			
DIN ISO 1302 R2 (Ra) technical drawings method of indicating surface texture	DIN ISO 2768 general tolerances	T1-m T2-K	DIN EN ISO 13920 B, F general tolerances for welded constructions
		ISO 5817 C arc-welded joints in steel	
02	Schriftkopf verändert	05.08.2016	D.IFLAEND Thomas Seibert
Revision	Modification Contents	Date	Made by Checked by
Description 1		Sub Supplier	
ISOLIERSCHEIBE		Sub Supplier Doc.No.	
Description 2		Date	Name
INSULATION DISK		Made by	01.02.2005 STEINHAG
Description 3		Checked by	
ИЗОЛЯЦИОННАЯ ШАЙБА		Approved by	11.02.2005 KARCHERH
Description 4		Material	THERMOSTAR SI MP 308
Dm40/18x5		Mass (kg)	0,009 kg
Drawing Name		Security Level	
		Status	
Material No.		Scale	1:1
Version		Sheet	1
		No. of Sheets	1
Drwg. No.		PLM ID	Revision
T0005.1445/DLZ001		20050068701	02