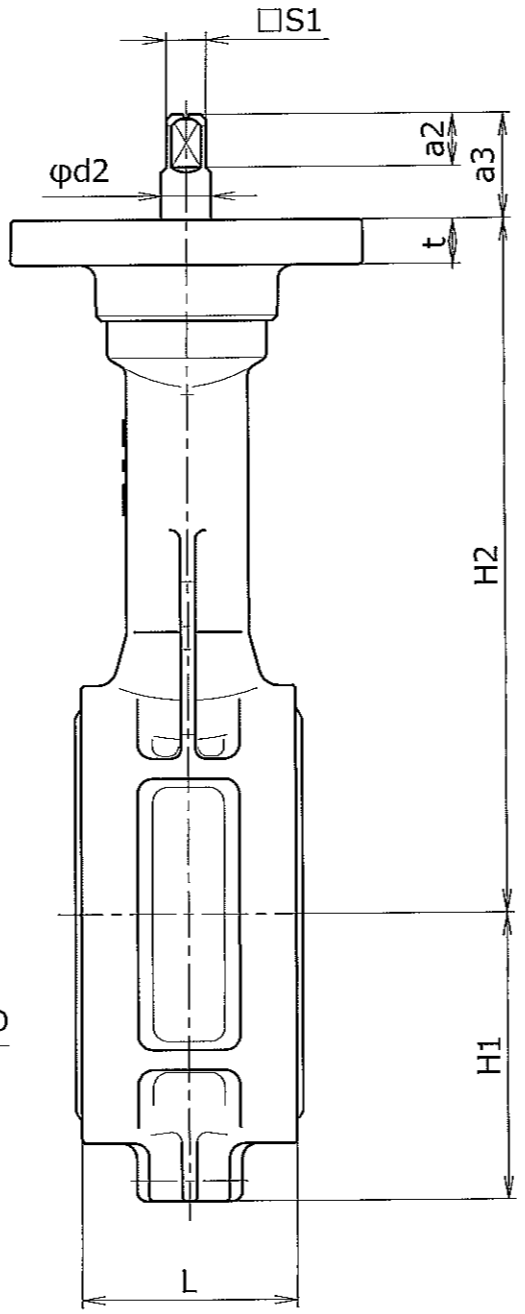
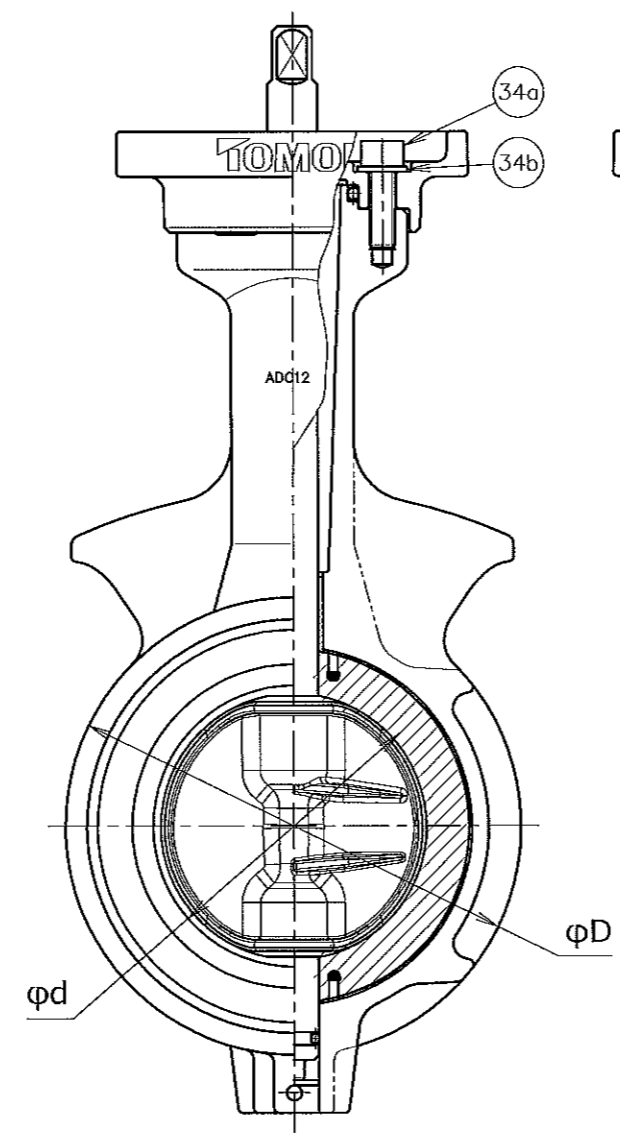
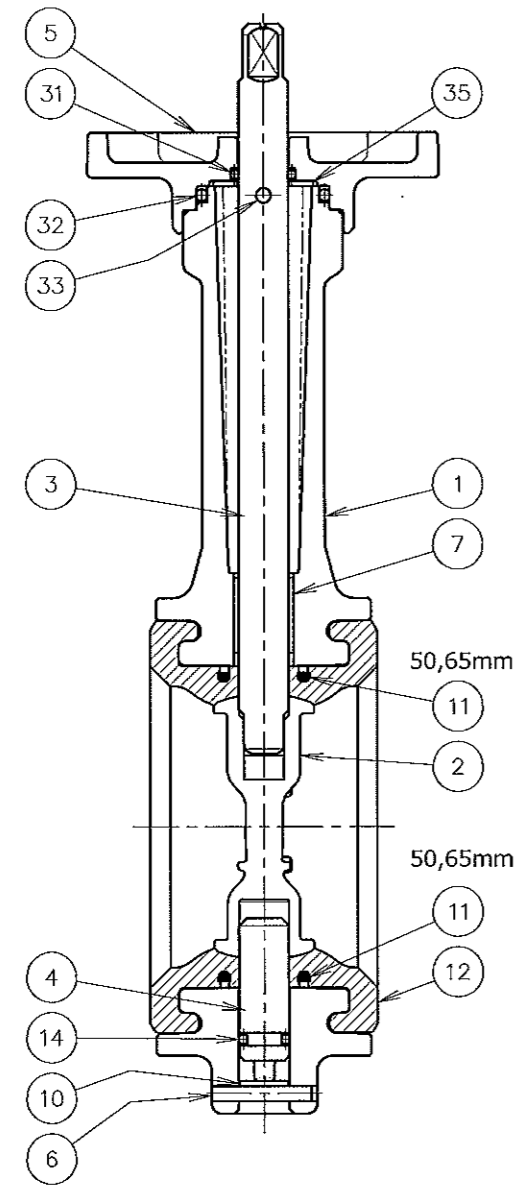
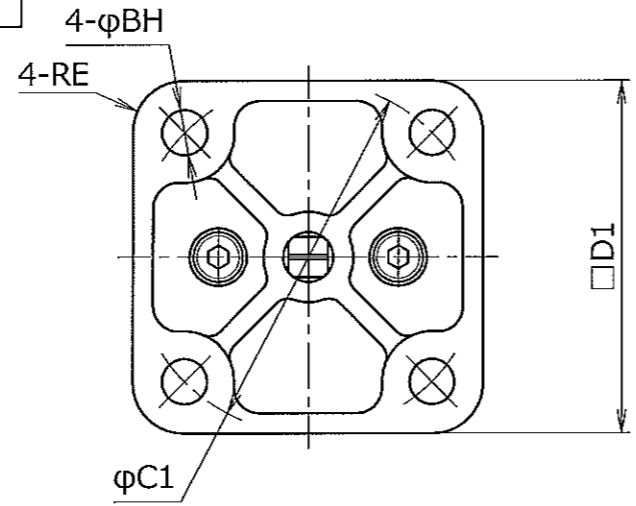


UNIT:mm

※ FLANGE CONNECTION	
JIS5K	
JIS10K	BS4504 PN10
ASME B16.1 Class125	
ASME B16.5 Class150	DIN PN10
JPI 150Lb	

※ Nominal Size		φd	L	φD	H1	H2	φd2	a2	a3	□S1	□D1	t	RE	φC1	φBH	Mass (kg) Approx.
inch	mm															
1-1/2	40	45	35	80	47	132	10	10.5	21.5	8	70	9	10	70	9	0.61
2	50	56	43	91	57	138	10	10.5	21.5	8	70	9	10	70	9	0.71
2-1/2	65	69	46	111	64	151	10	10.5	21.5	8	70	9	10	70	9	0.92

NOTE
 (1) ※Mark : See Specification sheet.



No	PARTS NAME	JIS	eq.ASTM	eq.DIN	Q'ty	REMARKS
35	PLATE	SS400	A36	17100 St44-2	1	
34b	PLANE WASHER	SPCC	A366	1623 St37-2G	2	
34a	HEX. SOCKET SCREW	SCM435	AISI4137	17200 34CrMo4	2	
33	SPRING PIN	SUS420J2	AISI420	17440 X30Cr13	1	
32	O-RING	(NBR)	(NBR)	(NBR)	1	
31	O-RING	(NBR)	(NBR)	(NBR)	1	
14	O-RING	(NBR)	(NBR)	(NBR)	1	
12	SEAT RING	(EPDM)	(EPDM)	(EPDM)	1	
11	SEAL RING	S20C	AISI1020	CK20	2	50mm,65mm
10	END COVER	SUS304	A240 S30400	17440 X5CrNi1810	1	
7	BEARING	SS400	A36	17100 St44-2	1	FLUORO RESIN COATING
6	SPRING PIN	SUS420J2	AISI420	17440 X30Cr13	1	
5	TOP PLATE	ADC12	B85 383.0	1725 226A	1	
4	LOWER STEM	SUS420J2	AISI420	17440 X30Cr13	1	
3	UPPER STEM	SUS420J2	AISI420	17440 X30Cr13	1	
2	DISC	SCS14	A351 CF8M	17445 G-X 6CrNiMo1810	1	
1	BODY	ADC12	B85 383.0	1725 226A	1	

MODEL 700Z-01 ALUMINIUM ALLOY DIE CASTING BODY 40 to 65mm
 STAINLESS DISC

TOMOE TYPE RUBBER-SEATED WAFER BUTTERFLY VALVE

TOMOE VALVE CO.,LTD.	Chief	E. Hisashi
	Check	K. Yamaguchi
	Design	K. Watanabe
	Date	3rd. Mar. 2015

DRAWING NUMBER	EZ0D-01SE1-0	Revision Number
----------------	--------------	-----------------

CAREER

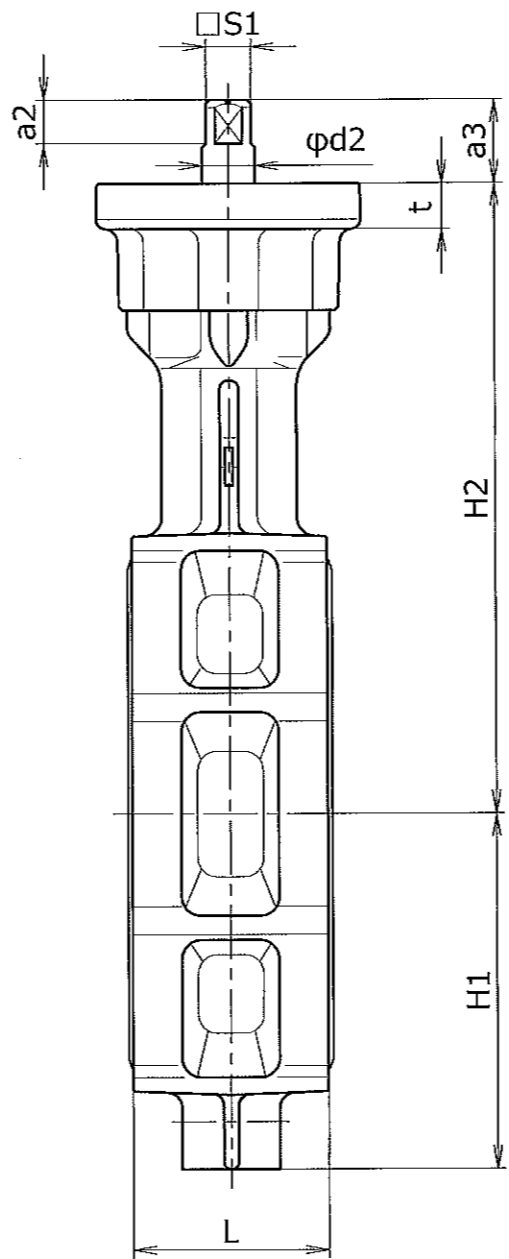
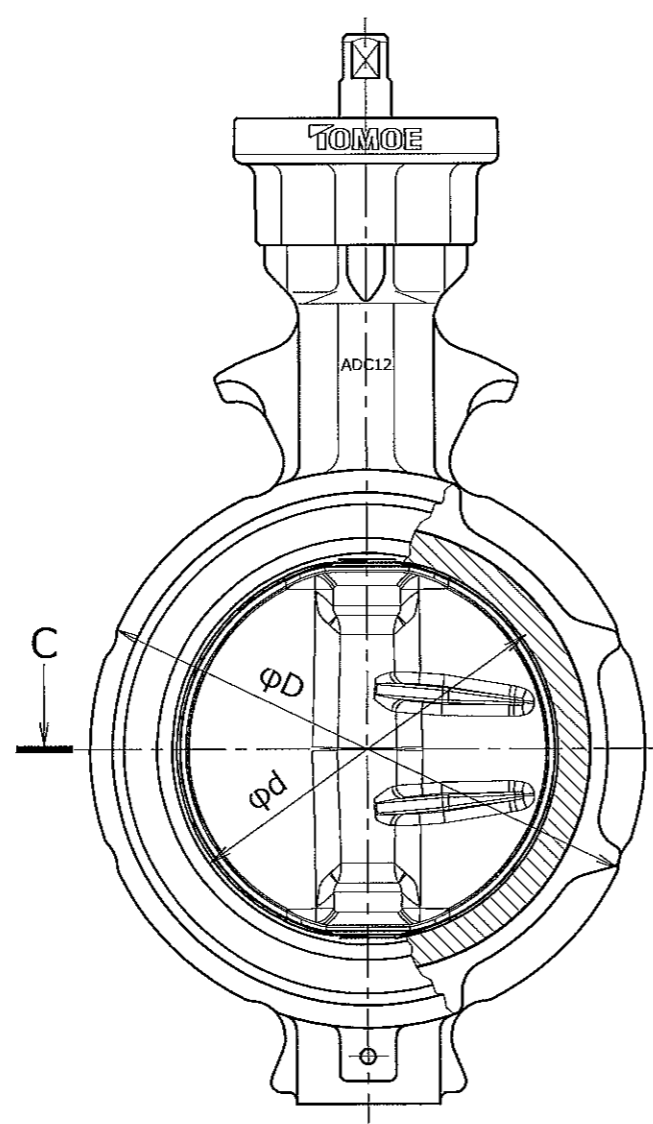
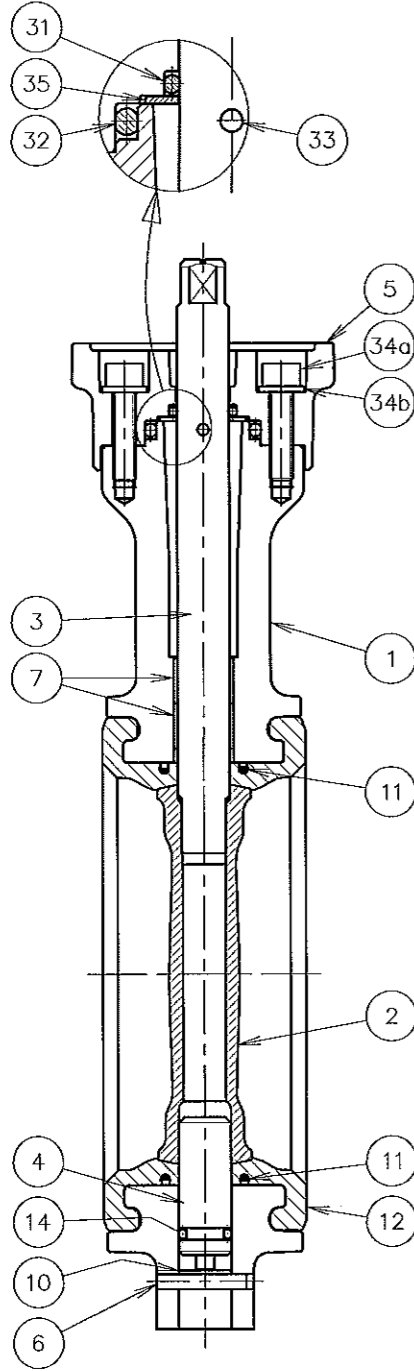
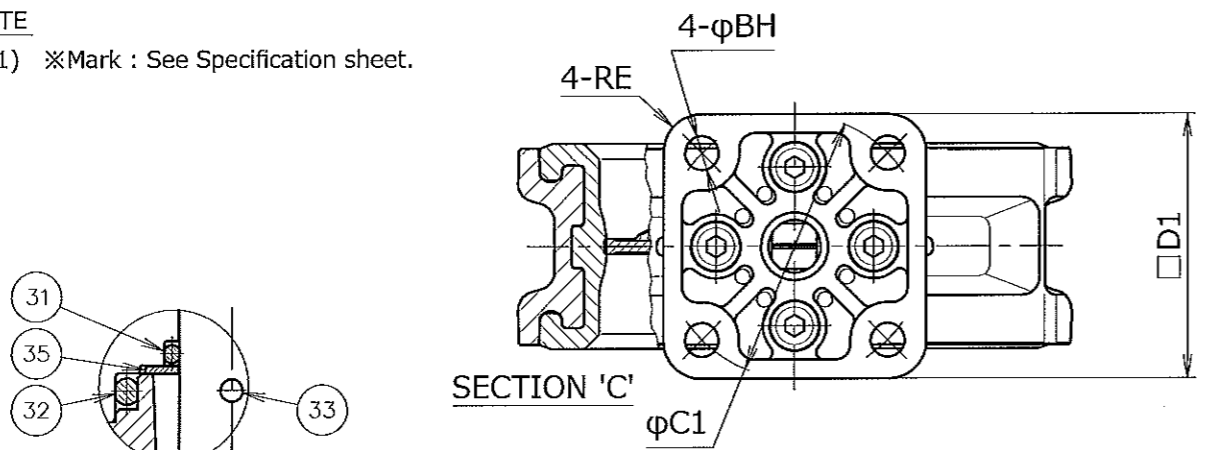
UNIT:mm

※ FLANGE CONNECTION	
JIS5K	
JIS10K	BS4504 PN10
ASME B16.1 Class125	
ASME B16.5 Class150	DIN PN10
JPI 150Lb	

※ Nominal Size		φd	L	φD	H1	H2	φd2	a2	a3	□S1	□D1	t	RE	φC1	φBH	Mass. (kg) Approx.
inch	mm															
3	80	84	46	125	77	156	12	11.5	22.5	10	70	12	10.0	70	9	1.4
4	100	104	52	147	94	167	14	11.5	22.5	12	70	12	10.0	70	9	1.8
5	125	130	56	180	108	191	16	16.5	27.5	14	102	14	23.5	102	11	3.1
6	150	153.5	56	210	125	202	18	16.5	27.5	14	102	14	23.5	102	11	4.0

NOTE

(1) ※Mark : See Specification sheet.



No	PARTS NAME	JIS	eq.ASTM	eq.DIN	Q'ty	REMARKS
35	PLATE	SS400	A36	17100 St44-2	1	
34b	PLANE WASHER	SPCC	A366	1623 St37-2G	4	
34a	HEX SOCKET SCREW	SCM435	AISI4137	17200 34CrMo4	4	
33	SPRING PIN	SUS420J2	AISI420	17440 X30Cr13	1	
32	O-RING	(NBR)	(NBR)	(NBR)	1	
31	O-RING	(NBR)	(NBR)	(NBR)	1	
14	O-RING	(NBR)	(NBR)	(NBR)	1	
12	SEAT RING	(EPDM)	(EPDM)	(EPDM)	1	
11	SEAL RING	S20C	AISI1020	CK20	2	
10	END COVER	SUS304	A240 S30400	17440 X5CrNi1810	1	
7	BEARING	SS400	A36	17100 St44-2	2	FLURO RESIN COATING
6	SPRING PIN	SUS420J2	AISI420	17440 X30Cr13	1	
5	TOP PLATE	ADC12	B85 383.0	1725 226A	1	
4	LOWER STEM	SUS420J2	AISI420	17440 X30Cr13	1	
3	UPPER STEM	SUS420J2	AISI420	17440 X30Cr13	1	
2	DISC	SCS14	A351 CF8M	17445 G-X 6CrNiMo1810	1	
1	BODY	ADC12	B85 383.0	1725 226A	1	

MODEL 700Z-01 ALUMINIUM ALLOY DIE CASTING BODY STAINLESS DISC 80 to 150mm

TOMOE TYPE RUBBER-SEATED WAFER BUTTERFLY VALVE

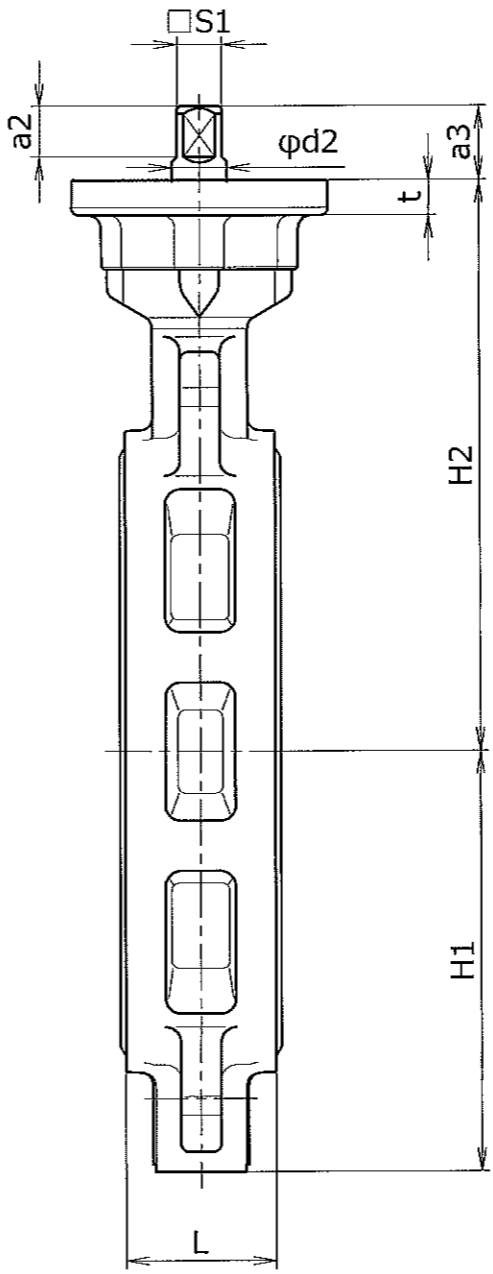
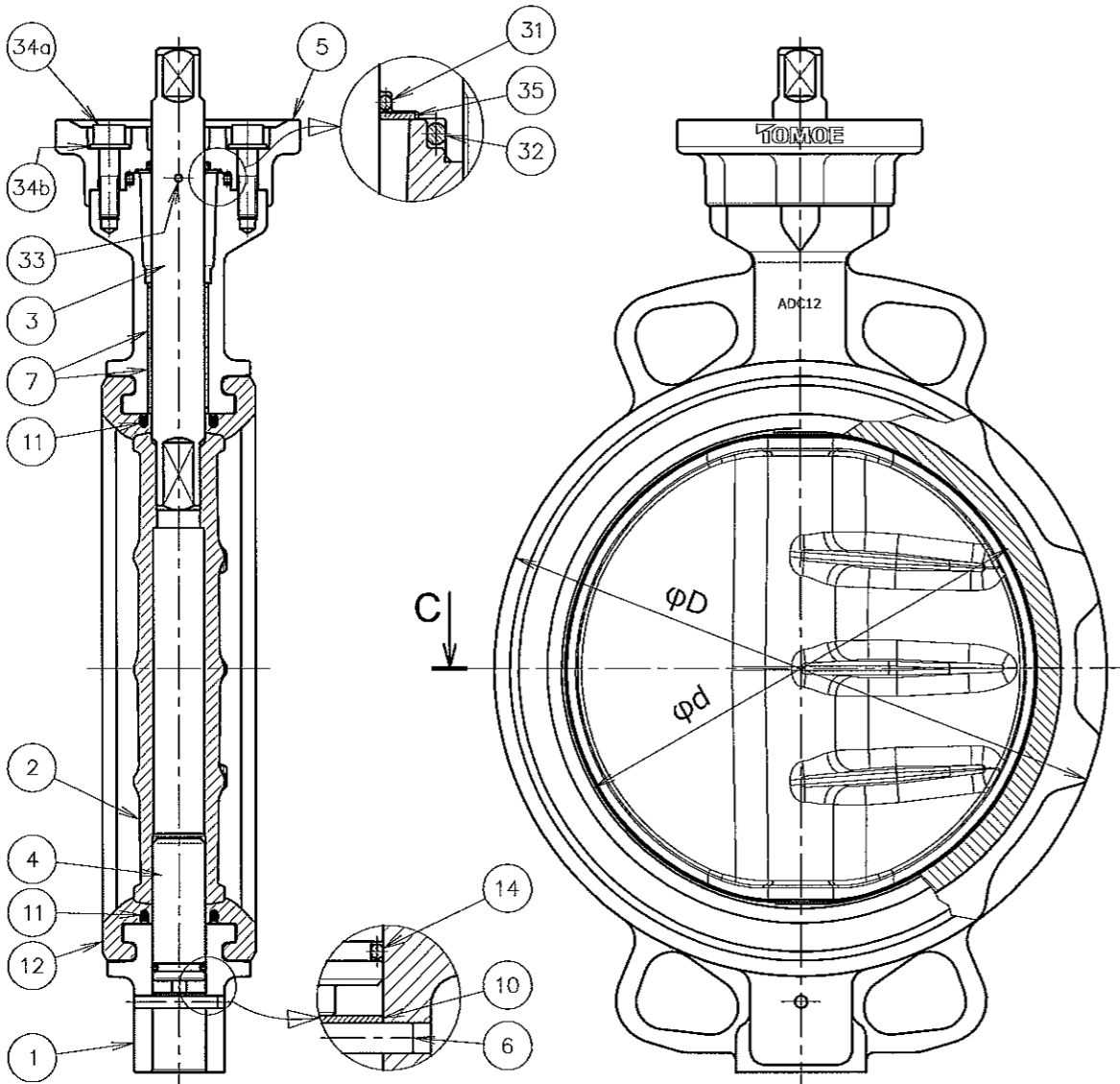
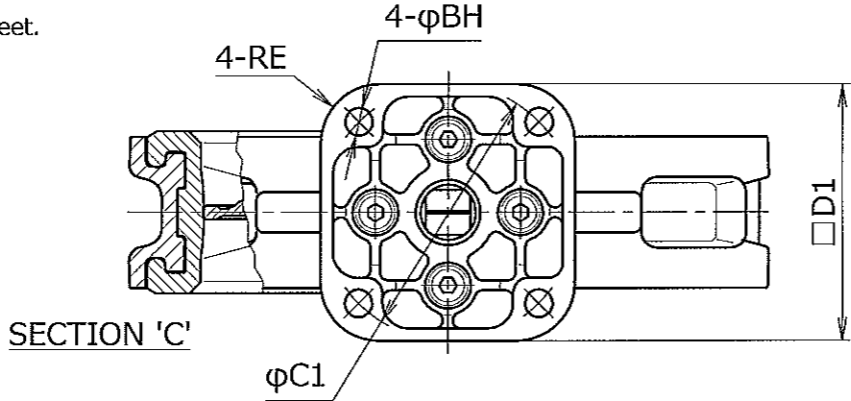
DRAWING NUMBER	EZ0D-01SE2-0	Chief	E. Hisashi
		Check	K. Yamaguchi
		Design	K. Hisada
		Date	3rd. Mar. 2015
		Revision Number	

UNIT:mm

※ FLANGE CONNECTION	
JIS5K	
JIS10K	BS4504 PN10
ASME B16.1 Class125	
ASME B16.5 Class150	DIN PN10
JPI 150Lb	

※ Nominal Size		φd	L	φD	H1	H2	φd2	a2	a3	□S1	□D1	t	RE	φC1	φBH	Mass (kg) Approx.
inch	mm															
8	200	199	60	255	167	227	22	20	30	18	102	14	23.5	102	11	6.2

NOTE
(1) ※Mark : See Specification sheet.



35	PLATE	SS400	A36	17100 St44-2	1	
34b	PLANE WASHER	SPCC	A366	1623 St37-2G	4	
34a	HEX.SOCKET SCREW	SCM435	AISI4137	17200 34CrMo4	4	
33	SPRING PIN	SUS420J2	AISI420	17440 X30Cr13	1	
32	O-RING	(NBR)	(NBR)	(NBR)	1	
31	O-RING	(NBR)	(NBR)	(NBR)	1	
14	O-RING	(NBR)	(NBR)	(NBR)	1	
12	SEAT RING			(EPDM) (EPDM) (EPDM)	1	
11	SEAL RING	S20C	AISI1020	CK20	2	
10	END COVER	SUS304	A240 S30400	17440 X5CrNi1810	1	
7	BEARING	SS400	A36	17100 St44-2	2	FLUORO RESIN COATING
6	SPRING PIN	SUS420J2	AISI420	17440 X30Cr13	1	
5	TOP PLATE	ADC12	B85 383.0	1725 226A	1	
4	LOWER STEM	SUS420J2	AISI420	17440 X30Cr13	1	
3	UPPER STEM	SUS420J2	AISI420	17440 X30Cr13	1	
2	DISC	SCS14	A351 CF8M	17445 GX 6CrNiMo1810	1	
1	BODY	ADC12	B85 383.0	1725 226A	1	
No	PARTS NAME	JIS	eq.ASTM	eq.DIN	Q'ty	REMARKS
		MATERIALS				

MODEL 700Z-01 ALUMINIUM ALLOY DIE CASTING BODY 200mm
STAINLESS DISC

TOMOE TYPE RUBBER-SEATED WAFER BUTTERFLY VALVE

TOMOE VALVE CO.,LTD.
 Chief: E. Hirose
 Check: R. Yamaguchi
 Design: K. Hirose
 Date: 3rd. Mar. 2015

Revision Number

DRAWING NUMBER: EZ0D-01SE3-0

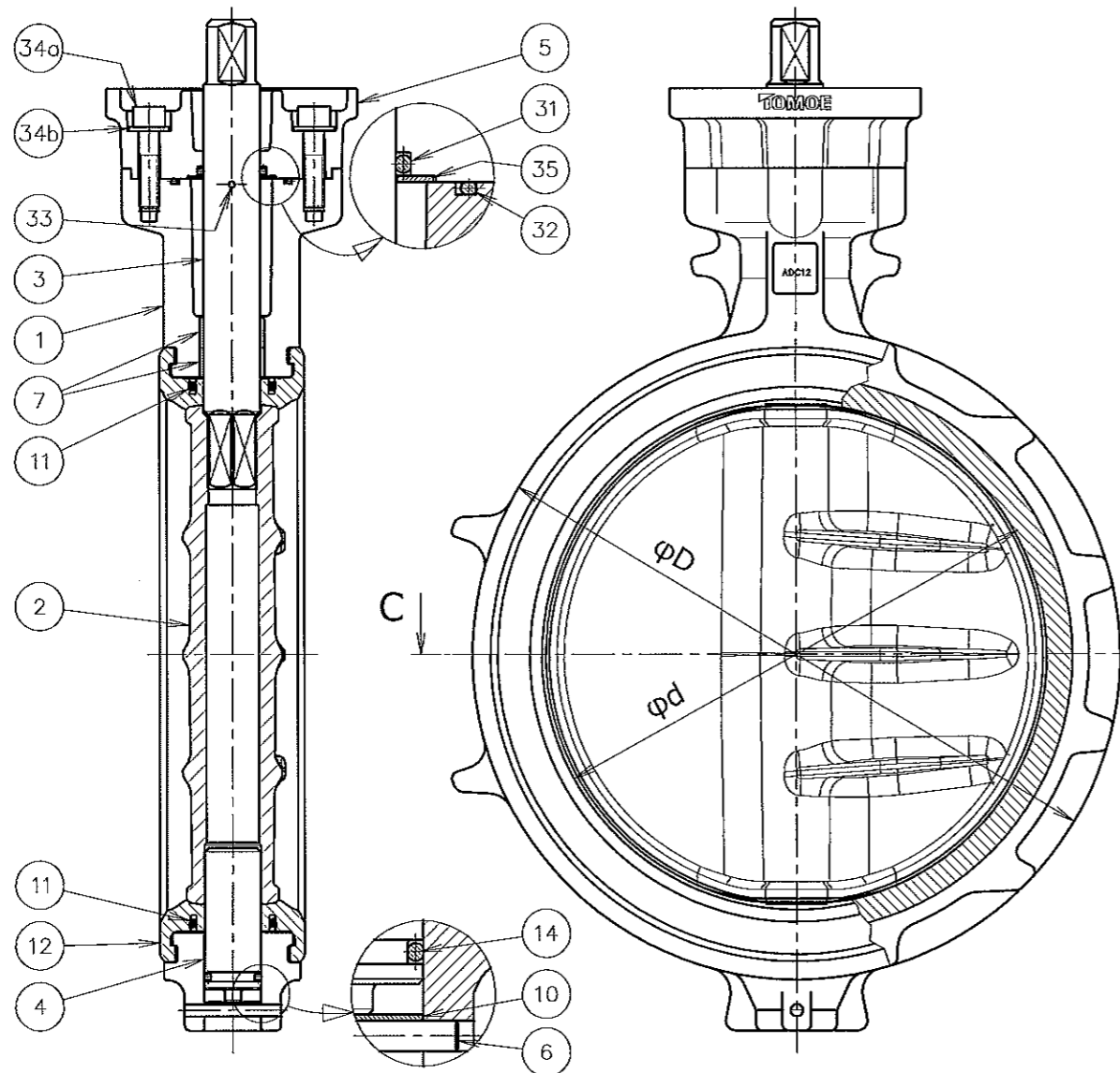
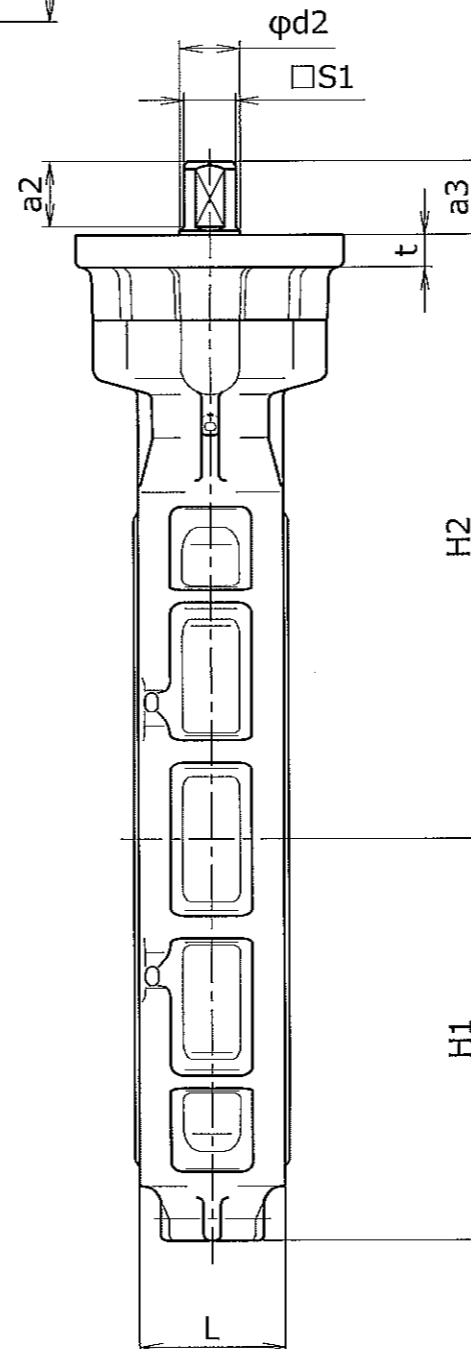
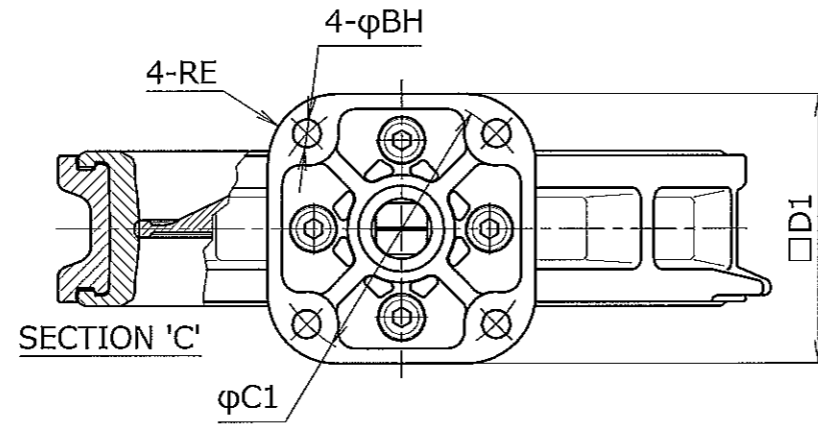
UNIT:mm

※ FLANGE CONNECTION	
JIS5K	
JIS10K	BS4504 PN10
ASME B16.1 Class125	
ASME B16.5 Class150	DIN PN10
JPI 150Lb	

※ Nominal Size		φd	L	φD	H1	H2	φd2	a2	a3	□S1	□D1	t	RE	φC1	φBH	Mass (kg) Approx.
inch	mm															
10	250	253	68	322	186	280	28	30.2	35.2	24	125	15	32.4	125	13	11
12	300	302	78	375	216	312	32	30.2	35.2	24	125	15	32.4	125	13	15

NOTE

(1) ※Mark : See Specification sheet.



35	PLATE	SS400	A36	17100 St44-2	1	
34b	PLANE WASHER	SPCC	A366	1623 St37-2G	4	
34a	HEX. SOCKET SCREW	SCM435	AISI4137	17200 34CrMo4	4	
33	SPRING PIN	SUS420J2	AISI420	17440 X30Cr13	1	
32	O-RING	(NBR)	(NBR)	(NBR)	1	
31	O-RING	(NBR)	(NBR)	(NBR)	1	
14	O-RING	(NBR)	(NBR)	(NBR)	1	
12	SEAT RING				1	
		(EPDM)	(EPDM)	(EPDM)		
11	SEAL RING	S20C	AISI1020	CK20	2	
10	END COVER	SUS304	A240 S30400	17440 X5CrNi1810	1	
7	BEARING	SS400	A36	17100 St44-2	2	FLURO RESIN COATING
6	SPRING PIN	SUS420J2	AISI420	17440 X30Cr13	1	
5	TOP PLATE	ADC12	B85 383.0	1725 226A	1	
4	LOWER STEM	SUS420J2	AISI420	17440 X30Cr13	1	
3	UPPER STEM	SUS420J2	AISI420	17440 X30Cr13	1	
2	DISC	SCS14	A351 CF8M	17445 GX 6CrNiMo1810	1	
1	BODY	ADC12	B85 383.0	1725 226A	1	
No	PARTS NAME	JIS	eq.ASTM	eq.DIN	Q'ty	REMARKS
		MATERIALS				

MODEL 700Z-01 ALUMINIUM ALLOY DIE CASTING BODY 250 to 300mm
STAINLESS DISC

TOMOE TYPE RUBBER-SEATED WAFER BUTTERFLY VALVE

TOMOE VALVE CO.,LTD.

Chief *E. Hoshino*
Check *K. Yamaguchi*
Design *K. L. Hoshino*
Date *3rd, Mar. 2015*

DRAWING
NUMBER

EZ0D-01SE4-0

Revision Number

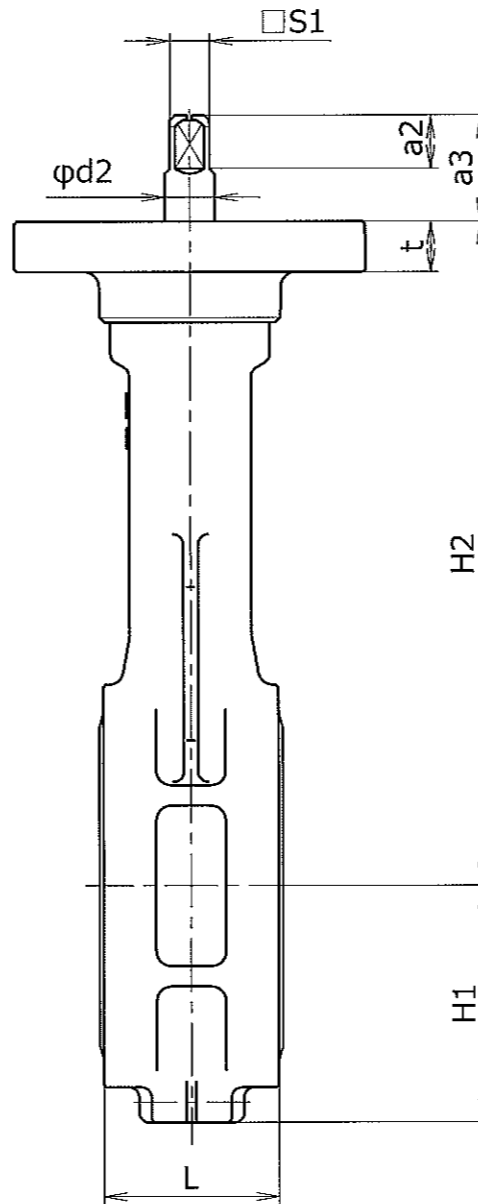
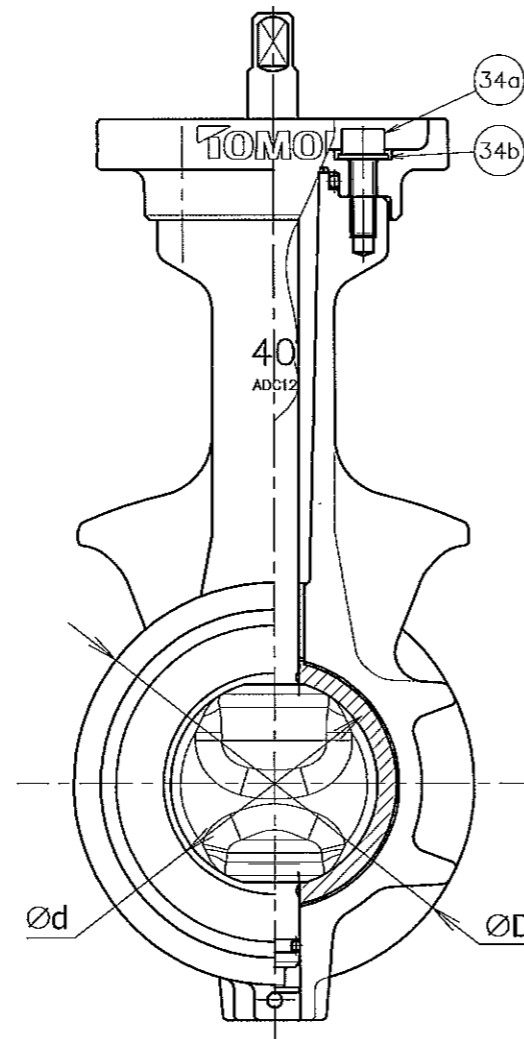
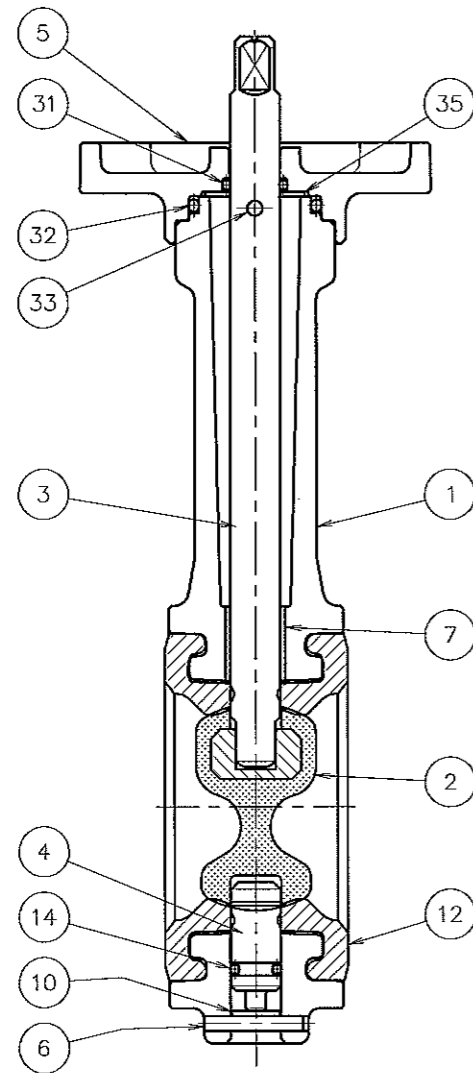
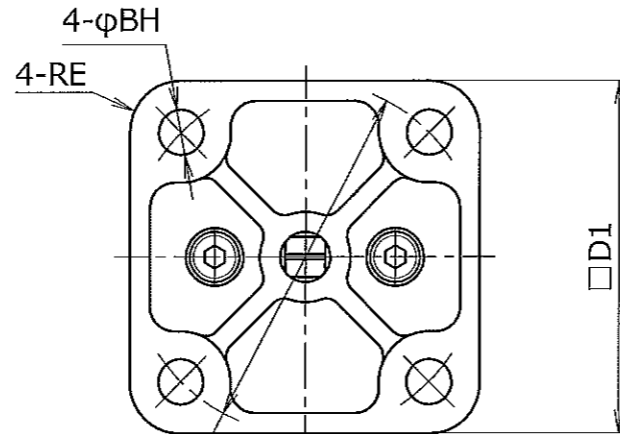
UNIT:mm

※ FLANGE CONNECTION	
JIS5K	
JIS10K	BS4504 PN10
ASME B16.1 Class125	
ASME B16.5 Class150	DIN PN10
JPI 150Lb	

Nominal Size		φd	L	φD	H1	H2	φd2	a2	a3	□S1	□D1	t	RE	φC1	φBH	Mass (kg) Approx.
inch	mm															
1-1/2	40	45	35	80	47	132	10	10.5	21.5	8	70	9	10	70	9	0.61

NOTE

(1) ※Mark : See Specification sheet.



35	PLATE	SS400	A36	17100 St44-2	1	
34b	PLANE WASHER	SPCC	A366	1623 St37-2G	2	
34a	HEX SOCKET SCREW	SCM435	AISI4137	17200 34CrMo4	2	
33	SPRING PIN	SUS420J2	AISI420	17440 X30Cr13	1	
32	O-RING	(NBR)	(NBR)	(NBR)	1	
31	O-RING	(NBR)	(NBR)	(NBR)	1	
14	O-RING	(NBR)	(NBR)	(NBR)	1	
12	SEAT RING	(EPDM)	(EPDM)	(EPDM)	1	
10	END COVER	SUS304	A240 S30400	17440 X5CrNi1810	1	
7	BEARING	SS400	A36	17100 St44-2	1	FLUORO RESIN COATING
6	SPRING PIN	SUS420J2	AISI420	17440 X30Cr13	1	
5	TOP PLATE	ADC12	B85 383.0	1725 226A	1	
4	LOWER STEM	SUS420J2	AISI420	17440 X30Cr13	1	
3	UPPER STEM	SUS420J2	AISI420	17440 X30Cr13	1	
2	DISC	SCS13 (PPS)	A351 CF8 (PPS)	17445 G-X6 CrNi189,(PPS)	1	PPS LINING
1	BODY	ADC12	B85 383.0	1725 226A	1	
No	PARTS NAME	JIS	eq.ASTM	eq.DIN	Q'ty	REMARKS
		MATERIALS				

MODEL 700Z-01 ALUMINIUM ALLOY DIE CASTING BODY PPS LINING DISC 40mm

TOMOE TYPE RUBBER-SEATED WAFER BUTTERFLY VALVE

TOMOE VALVE CO.,LTD.

Chief *E. Hino*
 Check *H. Yamaguchi*
 Design *K. Iizuka*
 Date *3rd. Mar. 2015*

DRAWING NUMBER EZ0D-01PE0-0

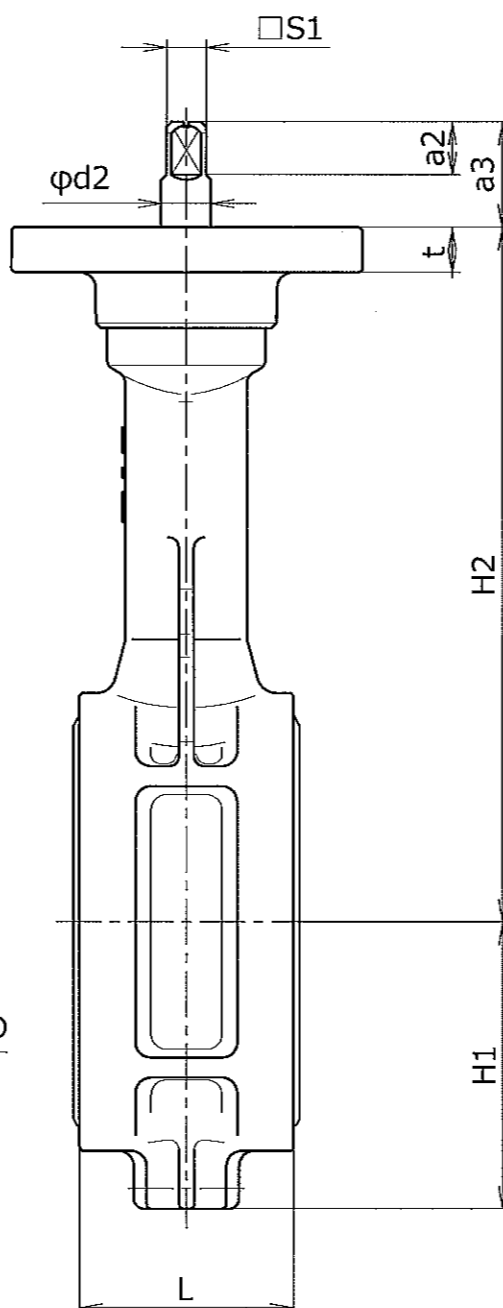
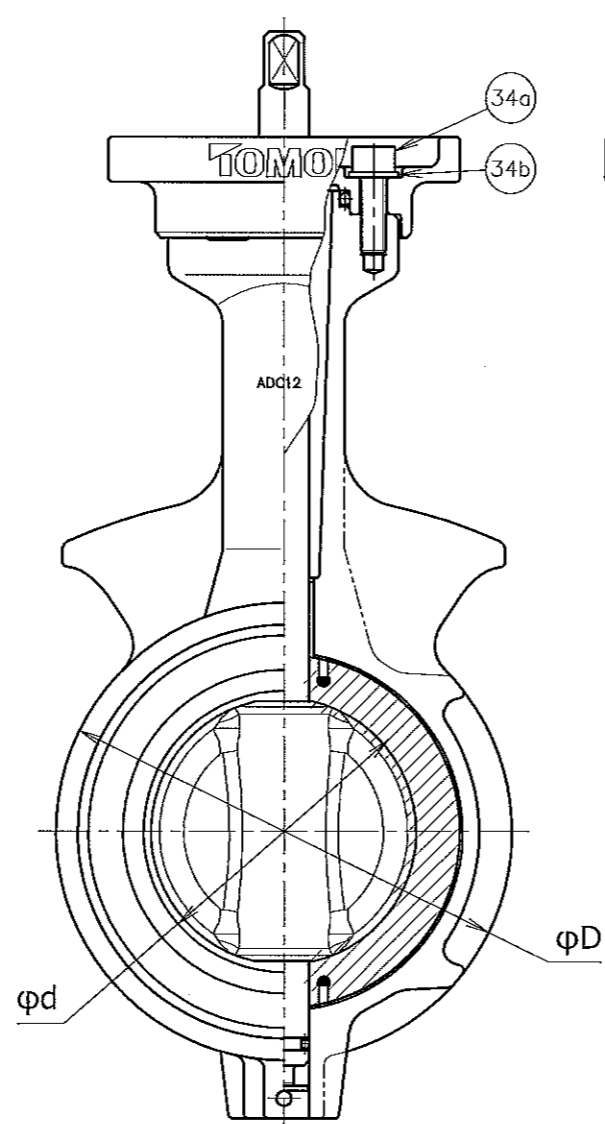
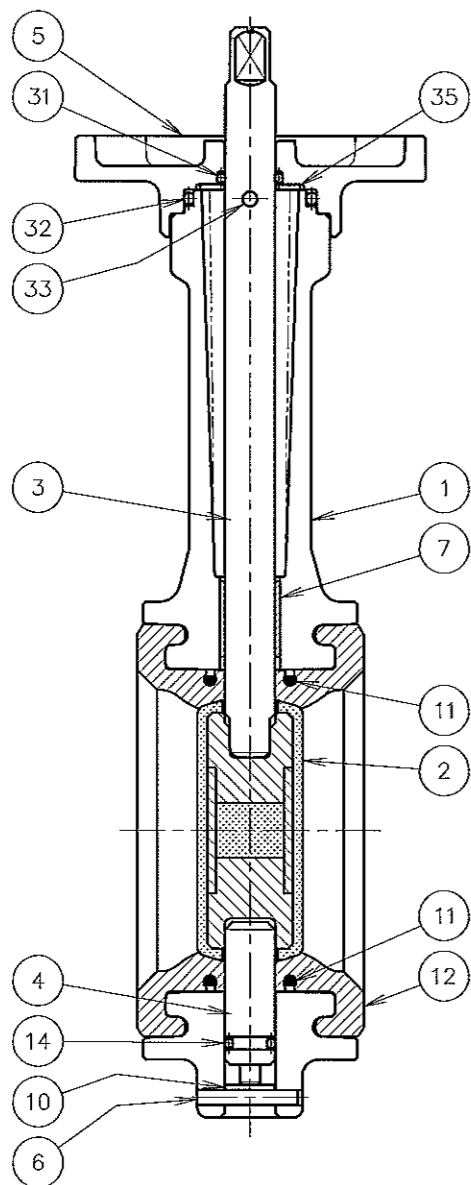
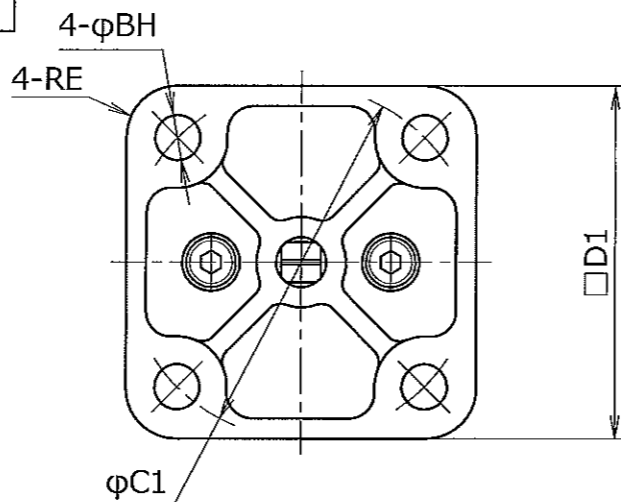
Revision Number

※ FLANGE CONNECTION	
JIS5K	
JIS10K	BS4504 PN10
ASME B16.1 Class125	
ASME B16.5 Class150	DIN PN10
JPI 150Lb	

NOTE

(1) ※Mark : See Specification sheet.

Nominal Size		φd	L	φD	H1	H2	φd2	a2	a3	□S1	□D1	t	RE	φC1	φBH	UNIT:mm	Mass (kg) Approx.
inch	mm																
2	50	56	43	91	57	138	10	10.5	21.5	8	70	9	10	70	9		0.71
2-1/2	65	69	46	111	64	151	10	10.5	21.5	8	70	9	10	70	9		0.92



No	PARTS NAME	JIS	eq.ASTM	eq.DIN	Q'ty	REMARKS
35	PLATE	SS400	A36	17100 St44-2	1	
34b	PLANE WASHER	SPCC	A366	1623 St37-2G	2	
34a	HEX SOCKET SCREW	SCM435	AISI4137	17200 34CrMo4	2	
33	SPRING PIN	SUS420J2	AISI420	17440 X30Cr13	1	
32	O-RING	(NBR)	(NBR)	(NBR)	1	
31	O-RING	(NBR)	(NBR)	(NBR)	1	
14	O-RING	(NBR)	(NBR)	(NBR)	1	
12	SEAT RING	(EPDM)	(EPDM)	(EPDM)	1	
11	SEAL RING	S20C	AISI1020	CK20	2	
10	END COVER	SUS304	A240 S30400	17440 X5CrNi1810	1	
7	BEARING	SS400	A36	17100 St44-2	1	FLUORO RESIN COATING
6	SPRING PIN	SUS420J2	AISI420	17440 X30Cr13	1	
5	TOP PLATE	ADC12	B85 383.0	1725 226A	1	
4	LOWER STEM	SUS420J2	AISI420	17440 X30Cr13	1	
3	UPPER STEM	SUS420J2	AISI420	17440 X30Cr13	1	
2	DISC	SCS14 (PPS)	A351 CF8M (PPS)	17445 G-X6 CrNiMo1810 (PPS)	1	PPS LINING
1	BODY	ADC12	B85 383.0	1725 226A	1	

MODEL 700Z-01 ALUMINIUM ALLOY DIE CASTING BODY PPS LINING DISC 50, 65mm

TOMOE TYPE RUBBER-SEATED WAFER BUTTERFLY VALVE

TOMOE VALVE CO.,LTD.

Chief *G. Hiroshi*
 Check *H. Yamaguchi*
 Design *K. Hasegawa*
 Date 3rd. Mar. 2015

DRAWING NUMBER EZ0D-01PE1-0

Revision Number

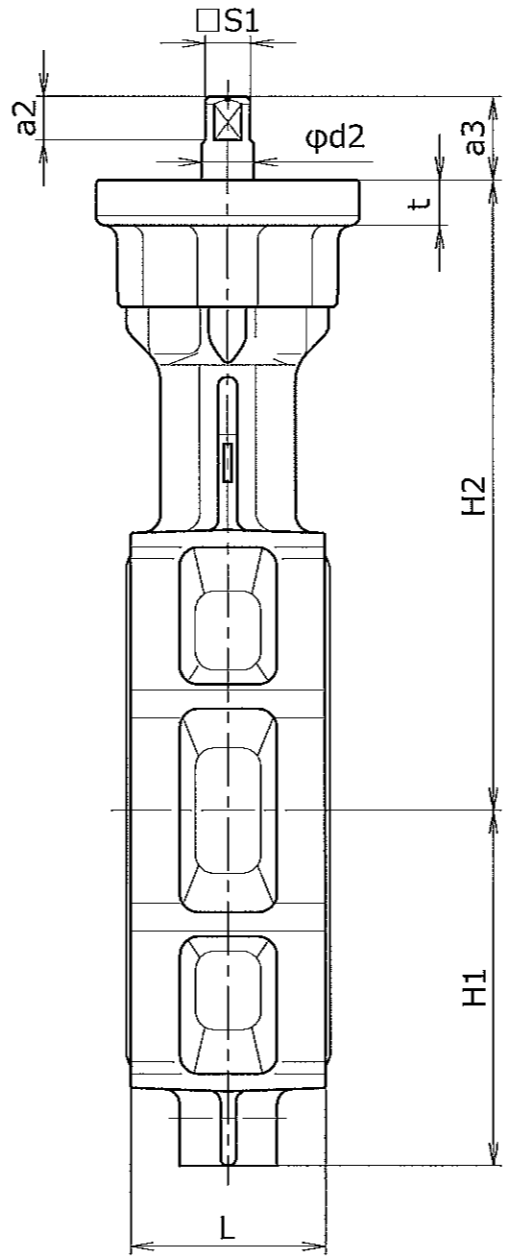
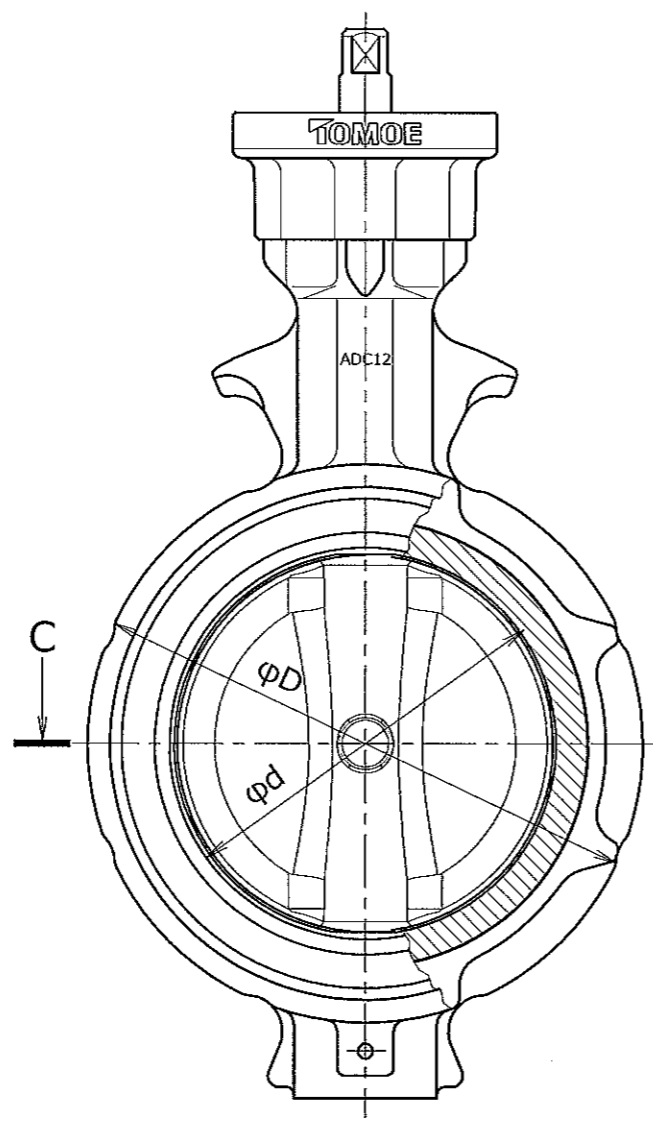
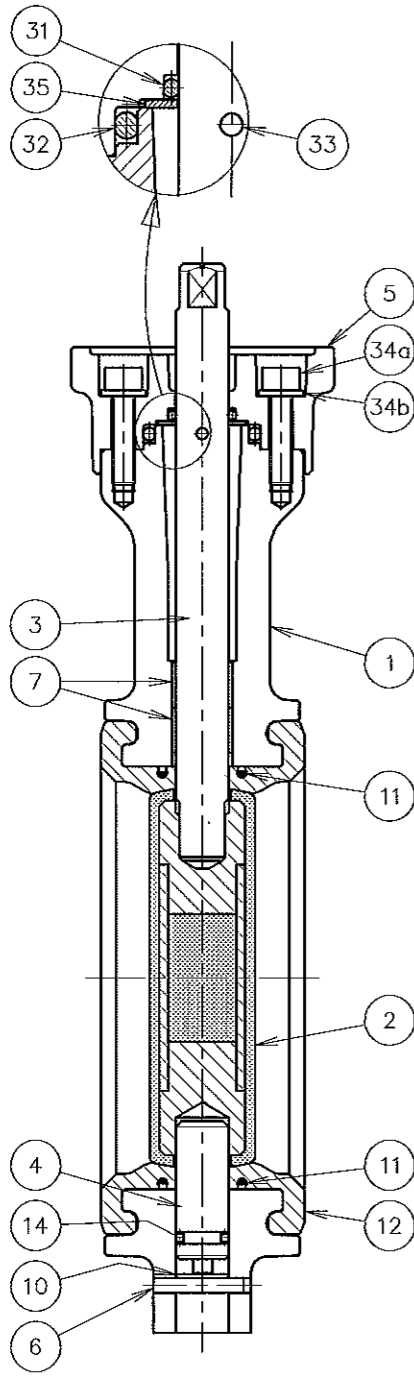
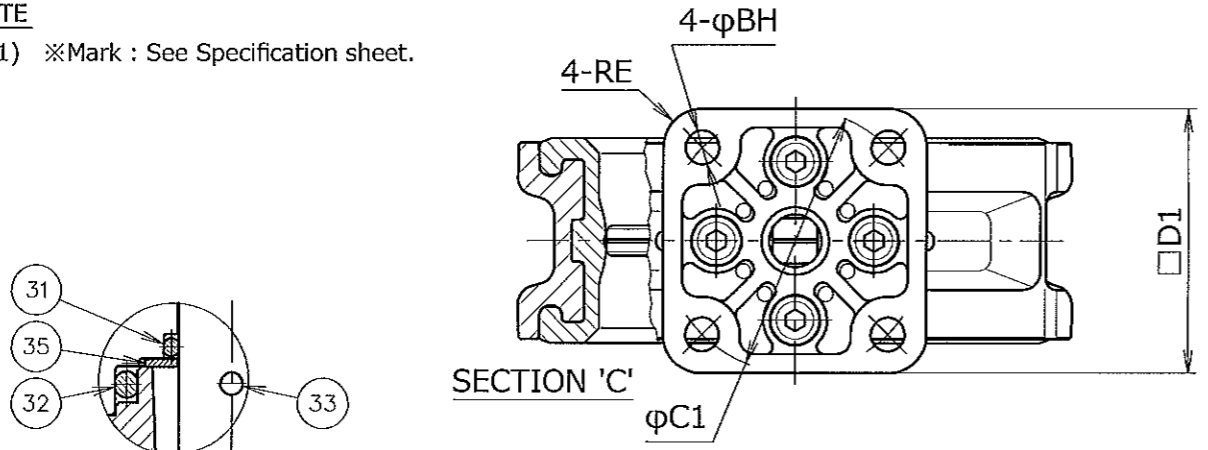
CAREER

※ FLANGE CONNECTION	
JIS5K	
JIS10K	BS4504 PN10
ASME B16.1 Class125	
ASME B16.5 Class150	DIN PN10
JPI 150Lb	

NOTE
(1) ※Mark : See Specification sheet.

Nominal Size		φd	L	φD	H1	H2	φd2	a2	a3	□S1	□D1	t	RE	φC1	φBH	Mass. (kg) Approx.
inch	mm															
3	80	84	46	125	77	156	12	11.5	22.5	10	70	12	10.0	70	9	1.4
4	100	104	52	147	94	167	14	11.5	22.5	12	70	12	10.0	70	9	1.8
5	125	130	56	180	108	191	16	16.5	27.5	14	102	14	23.5	102	11	3.1
6	150	153.5	56	210	125	202	18	16.5	27.5	14	102	14	23.5	102	11	4.0

UNIT:mm



35	PLATE	SS400	A36	17100 St44-2	1	
34b	PLANE WASHER	SPCC	A366	1623 St37-2G	4	
34a	HEX SOCKET SCREW	SCM435	AISI4137	17200 34CrMo4	4	
33	SPRING PIN	SUS420J2	AISI420	17440 X30Cr13	1	
32	O-RING	(NBR)	(NBR)	(NBR)	1	
31	O-RING	(NBR)	(NBR)	(NBR)	1	
14	O-RING	(NBR)	(NBR)	(NBR)	1	
12	SEAT RING				1	
		(EPDM)	(EPDM)	(EPDM)		
11	SEAL RING	S20C	AISI1020	CK20	2	
10	END COVER	SUS304	A240 S30400	17440 X5CrNi1810	1	
7	BEARING	SS400	A36	17100 St44-2	2	FLUORO RESIN COATING
6	SPRING PIN	SUS420J2	AISI420	17440 X30Cr13	1	
5	TOP PLATE	ADC12	B85 383.0	1725 226A	1	
4	LOWER STEM	SUS420J2	AISI420	17440 X30Cr13	1	
3	UPPER STEM	SUS420J2	AISI420	17440 X30Cr13	1	
2	DISC	SCS14 (PPS)	A351 CF8M (PPS)	17445 G-X6 CrNiMo1810,(PPS)	1	PPS LINING
1	BODY	ADC12	B85 383.0	1725 226A	1	
No	PARTS NAME	JIS	eq.ASTM	eq.DIN	Q'ty	REMARKS
		MATERIALS				

MODEL 700Z-01 ALUMINIUM ALLOY DIE CASTING BODY PPS LINING DISC 80 to 150mm

TOMOE TYPE RUBBER-SEATED WAFER BUTTERFLY VALVE

TOMOE VALVE CO.,LTD.

Chief *E. Hisaki*
 Check *K. Yamaguchi*
 Design *K. I. Hisada*
 Date *3rd. Mar. 2015*

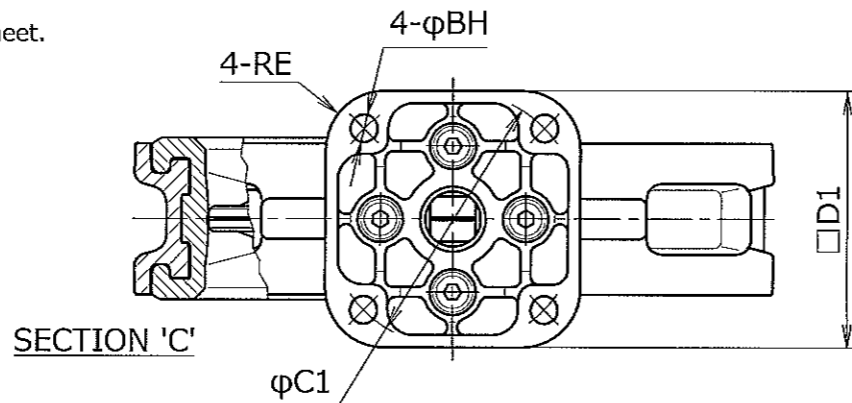
DRAWING NUMBER EZ0D-01PE2-0

Revision Number

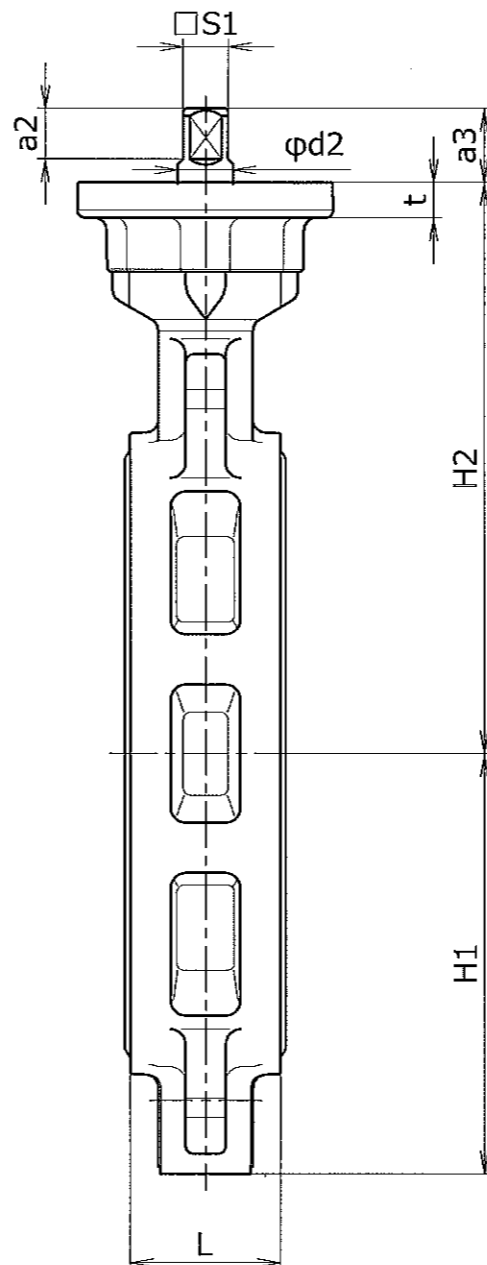
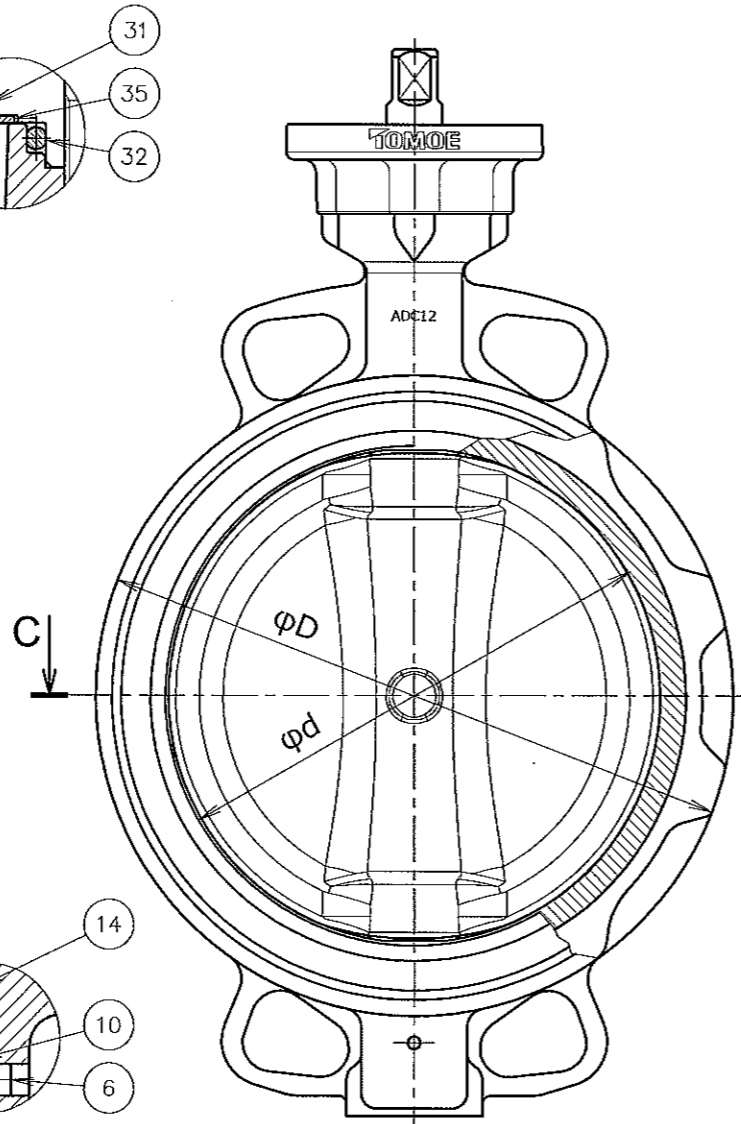
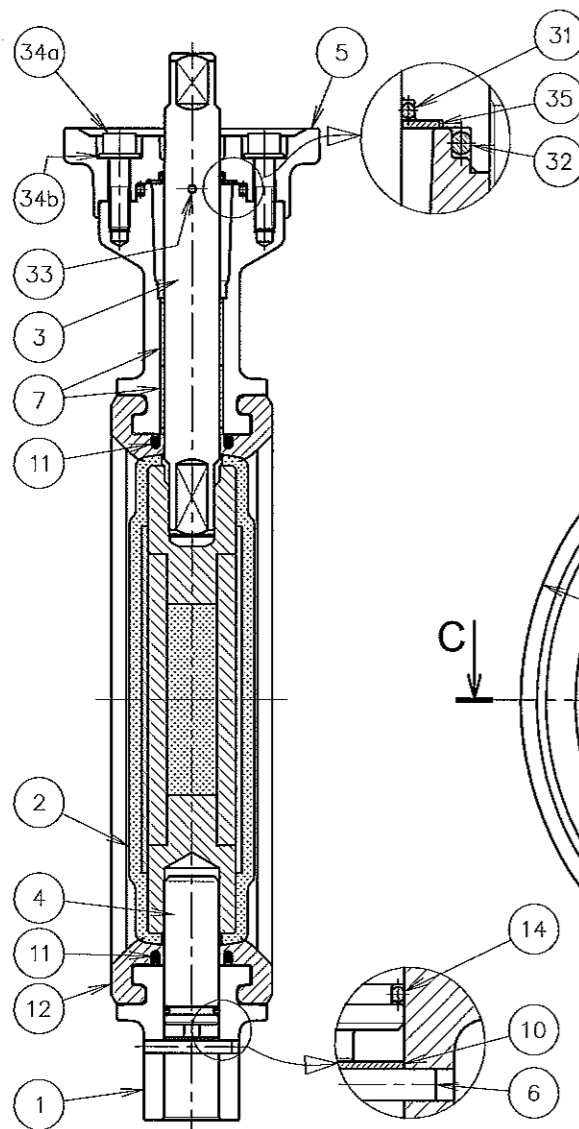
※ FLANGE CONNECTION	
JISSK	
JIS10K	BS4504 PN10
ASME B16.1 Class125	
ASME B16.5 Class150	DIN PN10
JPI 150Lb	

NOTE

(1) ※Mark : See Specification sheet.



Nominal Size		φd	L	φD	H1	H2	φd2	a2	a3	□S1	□D1	t	RE	φC1	φBH	Mass (kg) Approx.
inch	mm															
8	200	199	60	255	167	227	22	20	30	18	102	14	23.5	102	11	6.2



No	PARTS NAME	JIS	eq.ASTM	eq.DIN	Q'ty	REMARKS
35	PLATE	SS400	A36	17100 St44-2	1	
34b	PLANE WASHER	SPCC	A366	1623 St37-2G	4	
34a	HEX SOCKET SCREW	SCM435	AISI4137	17200 34CrMo4	4	
33	SPRING PIN	SUS420J2	AISI420	17440 X30Cr13	1	
32	O-RING	(NBR)	(NBR)	(NBR)	1	
31	O-RING	(NBR)	(NBR)	(NBR)	1	
14	O-RING	(NBR)	(NBR)	(NBR)	1	
12	SEAT RING	(EPDM)	(EPDM)	(EPDM)	1	
11	SEAL RING	S20C	AISI1020	CK20	2	
10	END COVER	SUS304	A240 S30400	17440 X5CrNi1810	1	
7	BEARING	SS400	A36	17100 St44-2	2	FLUORO RESIN COATING
6	SPRING PIN	SUS420J2	AISI420	17440 X30Cr13	1	
5	TOP PLATE	ADC12	B85 383.0	1725 226A	1	
4	LOWER STEM	SUS420J2	AISI420	17440 X30Cr13	1	
3	UPPER STEM	SUS420J2	AISI420	17440 X30Cr13	1	
2	DISC	SCS14 (PPS)	A351 CF8M (PPS)	17445 G-X6 CrNiMo1810,(PPS)	1	PPS LINING
1	BODY	ADC12	B85 383.0	1725 226A	1	

MODEL 700Z-01 ALUMINIUM ALLOY DIE CASTING BODY PPS LINING DISC 200mm

TOMOE TYPE RUBBER-SEATED WAFER BUTTERFLY VALVE

TOMOE VALVE CO.,LTD.

Chief *E. Misaki*
 Check *K. Yamaguchi*
 Design *K. Usuda*
 Date *3rd. Mar. 2015*

DRAWING NUMBER EZ0D-01PE3-0

Revision Number