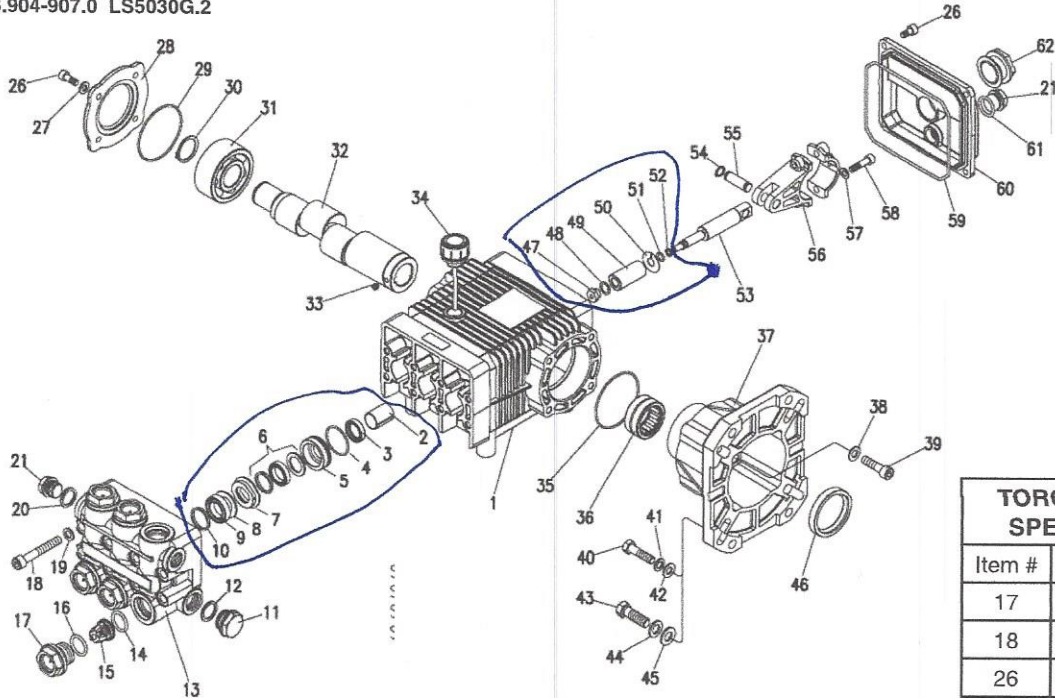


## LS.2 SERIES PUMP

8.904-902.0 LS3040G.2  
 8.904-904.0 LS3540G.2  
 8.904-905.0 LS4040G.2  
 8.904-907.0 LS5030G.2



TORQUE SPECS	
Item #	Ft.-lbs
17	75
18	30
26	7.6
39	10
47	7
58	13

### LS.2 SERIES PUMP PARTS LIST

ITEM	PART NO.	DESCRIPTION	QTY	ITEM	PART NO.	DESCRIPTION	QTY
1	8.717-129.0	Crankcase	1	26	9.802-939.0	Hexagonal Screw	9
2	9.803-196.0	Plunger Guide	3	27	9.803-210.0	Washer	4
3*	See Kit Below	Plunger Oil Seal	3	28	9.803-184.0	Closed Bearing Housing	1
4*	See Kit Below	O-Ring Ø1.78 x 31.47	3	29	8.717-225.0	O-Ring Ø 2.62 x61.6	1
5*	See Kit Below	Pressure Ring	3	30	9.802-914.0	Snap Ring	1
6*	See Kit Below	U-Seal, 15mm	3	31	9.803-168.0	Double Row Ball Bearing	1
7*	See Kit Below	Intermed. Ring 15mm	3	32	9.803-150.0	Crankshaft (LS3040G-1)	1
8*	See Kit Below	Back-up Ring	3		9.803-151.0	Crankshaft (LS3540G-1)	1
9*	See Kit Below	U-Seal, 15mm	3		9.803-152.0	Crankshaft (LS4040G-1)	1
10*	See Kit Below	Support Ring 15mm	3		9.803-153.0	Crankshaft (LS5030G-1)	1
11	9.802-926.0	Brass Plug, 1/2"	1	33	9.802-945.0	Set Screw	1
12	9.803-199.0	Copper Washer 1/2"	1	34	9.802-921.0	Oil Dip Stick	1
13	9.802-932.0	Manifold Housing	1	35	9.804-581.0	O-Ring Ø 3.53 x 55.56	1
14*	9.803-191.0	O-Ring Ø2.62 x 17.13	6	36	9.803-161.0	Needle Roller Bearing	1
15*	See Kit Below	Valve Assembly	6	37	9.803-183.0	Engine Flange	1
16*	9.803-193.0	O-Ring Ø2.62 x 20.29	6	38	9.803-221.0	Spring Washer	4
17	9.802-928.0	Valve Plug	6	39	9.803-240.0	Flange Screw	4
18	9.802-938.0	Manifold Stud Bolt	8	40	9.803-243.0	Engine Screw, 5/16"	4
19	9.802-884.0	Washer	8	41	9.803-215.0	Washer	4
20	9.803-198.0	Copper Washer 3/8"	1	42	9.802-889.0	Spring Washer	4
21	9.802-925.0	Brass Plug 3/8"	2	43	9.803-244.0	Engine Screw 3/8"	4

## LS.2 SERIES PUMP PARTS LIST (CONT)

ITEM	PART NO.	DESCRIPTION	QTY
44	9.803-216.0	Washer	4
45	9.803-217.0	Spring Washer	4
46	9.803-142.0	Crankshaft Seal	1
47*	See Kit Below	Plunger Nut	3
48*	See Kit Below	Washer, Copper, 9.2 x 13.5	3
49*	See Kit Below	Plunger, 15mm	3
50*	See Kit Below	Copper Spacer	3
51*	See Kit Below	O-Ring Ø1.78x5.28	3
52*	See Kit Below	Teflon Ring	3
53	9.803-145.0	Plunger Rod	3
54	9.802-913.0	Snap Ring	6
55	9.802-916.0	Connecting Rod Pin	3
56	9.803-158.0	Connecting Rod	3
57	9.803-218.0	Spring Washer	6
58	9.803-238.0	Connecting Rod Screw	6
59	8.933-016.0	O-Ring 2.62 x 126.67	1
60	8.717-145.0	Crankcase Cover	1
61	9.803-197.0	O-Ring, Ø 1.78 x 14	1
62	9.803-202.0	Sight Glass, G3/4	1

\* Part available in kit (See below)

REPAIR KIT NUMBER	9.802-622.0	9.802-623.0	8.933-023.0	9.802-603.0	9.802-609.0
KIT DESCRIPTION	Plunger Seal 15mm	Complete Seal Packing 15mm	Plunger 15mm	Complete Valve	Plunger Oil Seals
ITEM NUMBERS INCLUDED	4, 6, 8, 9, 10	4, 5, 6, 7, 8, 9, 10	47, 48, 49, 50, 51, 52	14, 15, 16	3