

TFI...FK
TFI...FK MAG.
TFI...FK-2RS
TFI...FK-2RS MAG.

(SI...E; SI...ES; SI...ES-2RS; SIA...ES-2RS; GIR...DO; GIR...DO-2RS)

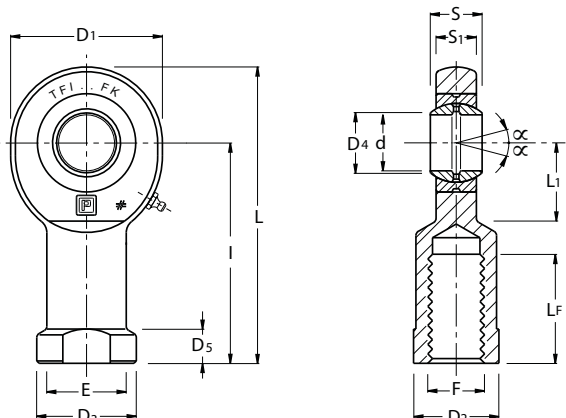
TERMINALI A SNODO
 ISO 12240-4, SERIE E TIPO F
 RILUBRIFICABILI

ACCOPIAMENTO: ACCIAIO SU ACCIAIO
 TERMINALE IN ACCIAIO C45 ZINCATO

ROD ENDS

ISO 12240-4, SERIES E TYPE F
 WITH GREASE NIPPLE

COUPLING: STEEL/STEEL
 HOUSING MADE OF STEEL C45 ZINC PLATED



SIGLA (*) ARTICLE (*)	TOLLERANZE TOLERANCES		S	D4	I	D1	D3	E	D2	D5	S1	L	L1	LF min	F	FATTORI DI CARICO LIMITE LOAD FACTORS		GIUOCO SNODO RADIALE RADIAL CLEARANCE	ANGOLO DI OSCILLAZIONE CC SWINGING ANGLE CC	PESO IN Kg. WEIGHT Kg.	
	d	S														C Dinamico Dynamic	Co Statico Static				
	d	S																			KN
mm.																					
TFI 6 FK (1)	6	0 ± -0.008	0 ± -0.12	6	8	30	21	13	10.5	11	5	4.3	40.5	10.5	11	M 6X1	3.4	8.1	0.032 - 0.068	13	0.02
TFI 8 FK (1)	8	0 ± -0.008	0 ± -0.12	8	10.2	36	24	15	12	13	5	6	48	12	15	M 8X1.25	5.5	12.9	0.032 - 0.068	15	0.04
TFI 10 FK (1)	10	0 ± -0.008	0 ± -0.12	9	13.2	43	29	15	15	6.5	7	57.5	14	20	M10X1.5	8.1	17.6	0.032 - 0.068	12	0.06	
TFI 12 FK (1)	12	0 ± -0.008	0 ± -0.12	10	15	50	34	20	17	18	6.5	8	67	17.5	24	M12X1.75	10.8	24.5	0.040 - 0.068	11	0.09
TFI 15 FK (2RS) (2)	15	0 ± -0.008	0 ± -0.12	12	18.4	61	40	24	20	21	8	10	81	20	30	M14X2	17	36	0.040 - 0.082	8	0.18
TFI 17 FK (2RS) (2)	17	0 ± -0.008	0 ± -0.12	14	20.7	67	46	28	23	24	10	11	90	23	34	M16X2	21.2	45	0.040 - 0.082	10	0.22
TFI 20 FK (2RS) (2)	20	0 ± -0.010	0 ± -0.12	16	24.1	77	53	35	27.5	32	10	13	103.5	27.5	40	M20X1.5	30	60	0.050 - 0.082	9	0.35
TFI 25 FK (2RS)	25	0 ± -0.010	0 ± -0.12	20	29.3	94	64	42	33.5	36	12	17	126	32	48	M24X2	48	83	0.050 - 0.082	7	0.64
TFI 30 FK (2RS)	30	0 ± -0.010	0 ± -0.12	22	34.2	110	73	50	40	41	15	19	146.5	37	56	M30X2	62	110	0.050 - 0.100	6	0.93
TFI 35 FK (2RS)	35	0 ± -0.012	0 ± -0.12	25	39.7	125	82	58	47	50	15	21	166	42	60	M36X3	80	146	0.060 - 0.100	6	1.30
TFI 40 FK (2RS)	40	0 ± -0.012	0 ± -0.12	28	45	142	92	65	52	55	18	23	188	48	67	M39X3	100	180	0.060 - 0.120	7	2.01
TFI 45 FK (2RS)	45	0 ± -0.012	0 ± -0.12	32	50.7	145	102	70	58	60	20	27	196	52	65	M42X3	127	240	0.060 - 0.120	7	2.50
TFI 50 FK (2RS)	50	0 ± -0.012	0 ± -0.12	35	56	160	112	75	62	65	20	30	216	59	69	M45X3	156	290	0.060 - 0.120	6	3.50
TFI 60 FK (2RS)	60	0 ± -0.015	0 ± -0.15	44	66.8	175	135	88	70	75	20	38	242	75	73	M52X3	245	450	0.072 - 0.120	6	5.90
TFI 70 FK (2RS)	70	0 ± -0.015	0 ± -0.15	49	77.8	200	160	98	80	85	20	42	280	87	80	M56X4	315	610	0.072 - 0.142	6	8.60
TFI 80 FK (2RS)	80	0 ± -0.015	0 ± -0.15	55	89.4	230	180	110	95	100	25	47	320	100	85	M64X4	400	695	0.072 - 0.142	6	12.00
VERSIONE CON FILETTO MAGGIORATO HIGHER THREAD VERSION																					
TFI 40 FK (2RS) MAG	40	0 ± -0.012	0 ± -0.12	28	45	142	92	65	52	55	18	23	188	48	67	M42X3	100	102.5	0.060 - 0.120	7	1.96
TFI 45 FK (2RS) MAG	45	0 ± -0.012	0 ± -0.12	32	50.7	145	102	70	58	60	20	27	196	52	65	M45X3	127	141	0.060 - 0.120	7	2.44
TFI 50 FK (2RS) MAG	50	0 ± -0.012	0 ± -0.12	35	56	160	112	75	62	65	20	30	216	59	69	M52X3	156	140	0.060 - 0.120	6	3.40
TFI 60 FK (2RS) MAG	60	0 ± -0.015	0 ± -0.15	44	66.8	175	135	88	70	75	20	38	242	75	73	M60X4	245	183	0.072 - 0.120	6	6.10
TFI 70 FK (2RS) MAG	70	0 ± -0.015	0 ± -0.15	49	77.8	200	160	98	85	80	20	42	280	87	80	M72X4	315	306	0.072 - 0.142	6	8.70
TFI 80 FK (2RS) MAG	80	0 ± -0.015	0 ± -0.15	55	89.4	230	180	110	95	100	25	47	320	100	85	M80X4	400	387	0.072 - 0.142	6	13.90

(1) NON RILUBRIFICABILE.

(2) RILUBRIFICABILE MEDIANTE UN FORO DI LUBRIFICAZIONE SULLA TESTA.

(3) FORNIBILI ANCHE NELLA VERSIONE CON NODO SFERICO SRC... OPPURE SRL...

(*) NEL CASO DI RICHIESTA CON FILETTATURA SINISTRORSA AGGIUNGERE NEL COD. ART. LA LETTERA "L" ES. TFI...L - DISPONIBILITA'E PREZZO A RICHIESTA.

(1) NON LUBRICATING.

(2) LUBRICATING BY A LUBRICATION OPENING ON THE HEAD.

(3) ALSO AVAILABLE WITH SPHERICAL PLAIN BEARING SRC... OR SRL...

(*) WHEN REQUIRING A LEFT-END THREAD, ADD THE LETTER "L" IN THE ARTICLE CODE (e.g.: TFI...L). AVAILABILITY AND PRICES UPON REQUEST.